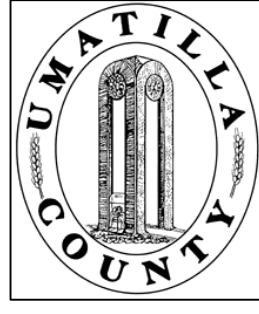


This map was prepared for Assessment & Taxation purposes only and was NOT prepared nor is it suitable for legal, engineering or surveying purposes.



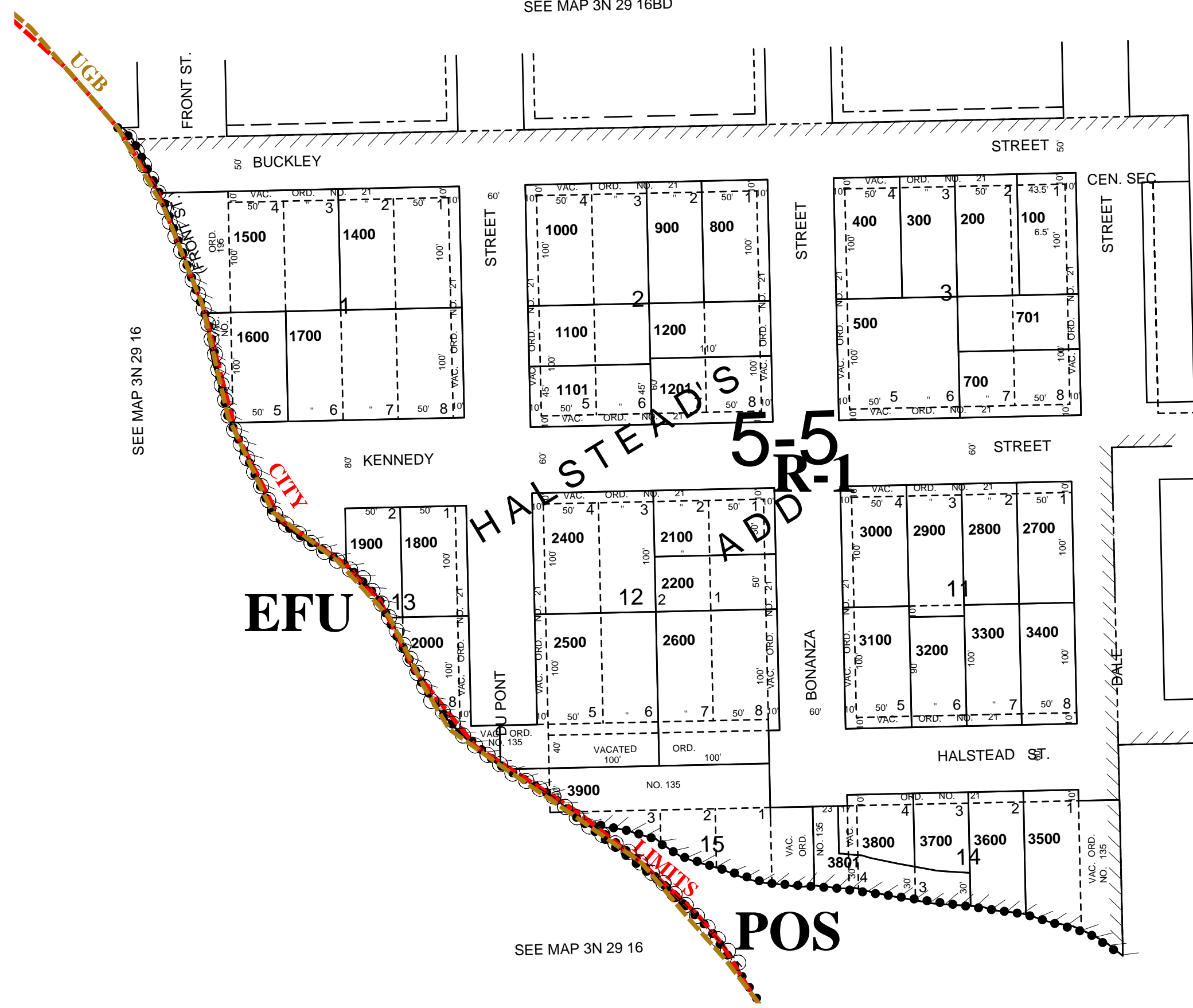
NE1/4 SW1/4 SEC 16 T3N R29E WM UMATILLA COUNTY, OR

SCALE: 1" = 100'

See FEMA FIRM for areas subject to flooding

3N 29 16CA CITY OF ECHO

CANCELLED
TL 3701
601
2300
600
1300
2501



SEE MAP 3N 29 16DB

3N 29 16CA