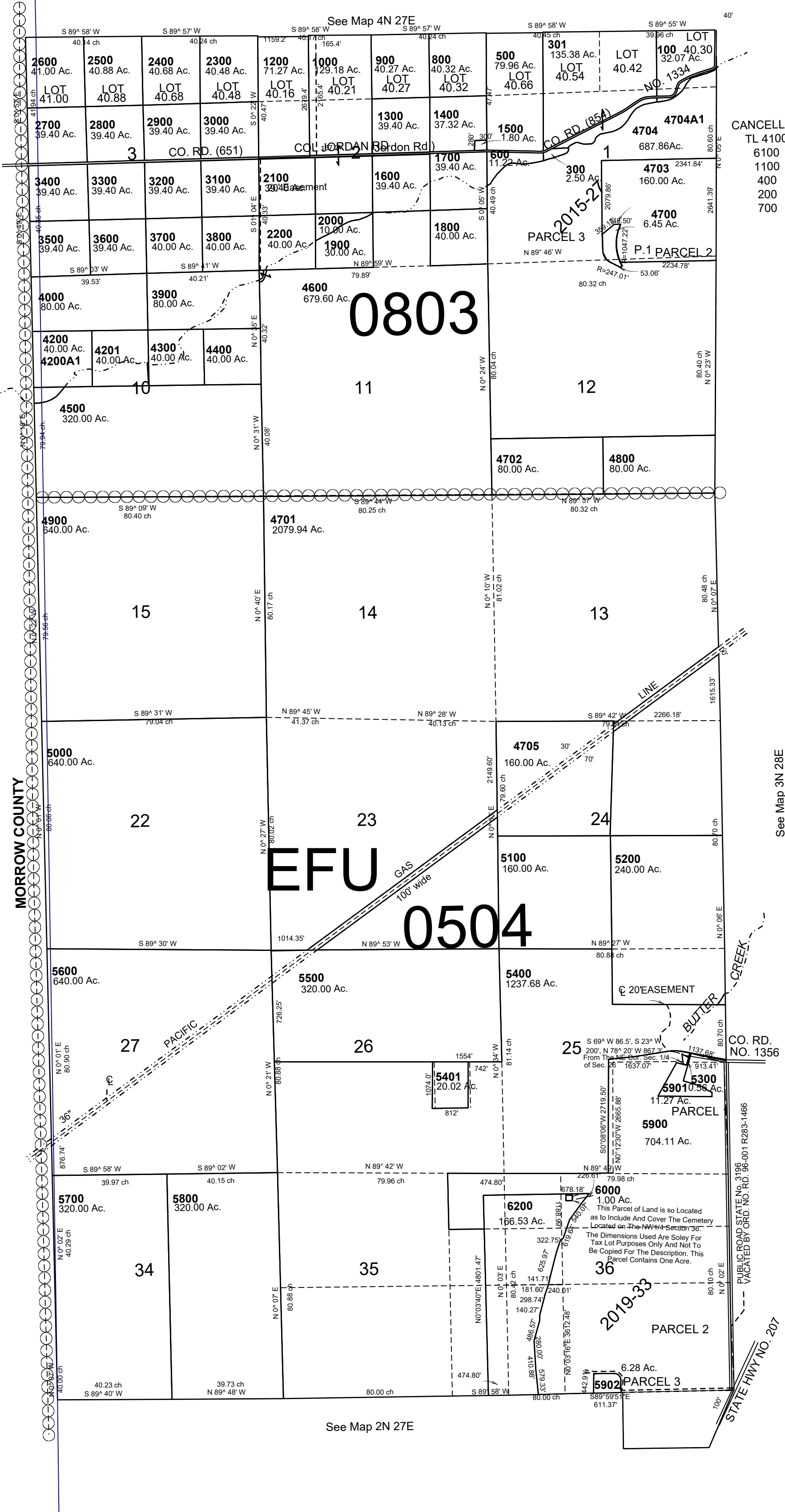


This map was prepared for Assessment & Taxation purposes only and was NOT prepared, nor is it suitable for legal, engineering or surveying purposes.

T3N R27E WM
UMATILLA COUNTY
SCALE: 1" = 2000'



3N 27
NZ 2P 92-94, 101-103 & 156-158

CANCELLED
TL 4100
6100
1100
400
200
700

See Map 3N 28E

PUBLIC ROAD STATE NO. 3195
VACATED BY ORD. NO. 96-011 R283-1465

Revised: 2-26-21

3N27