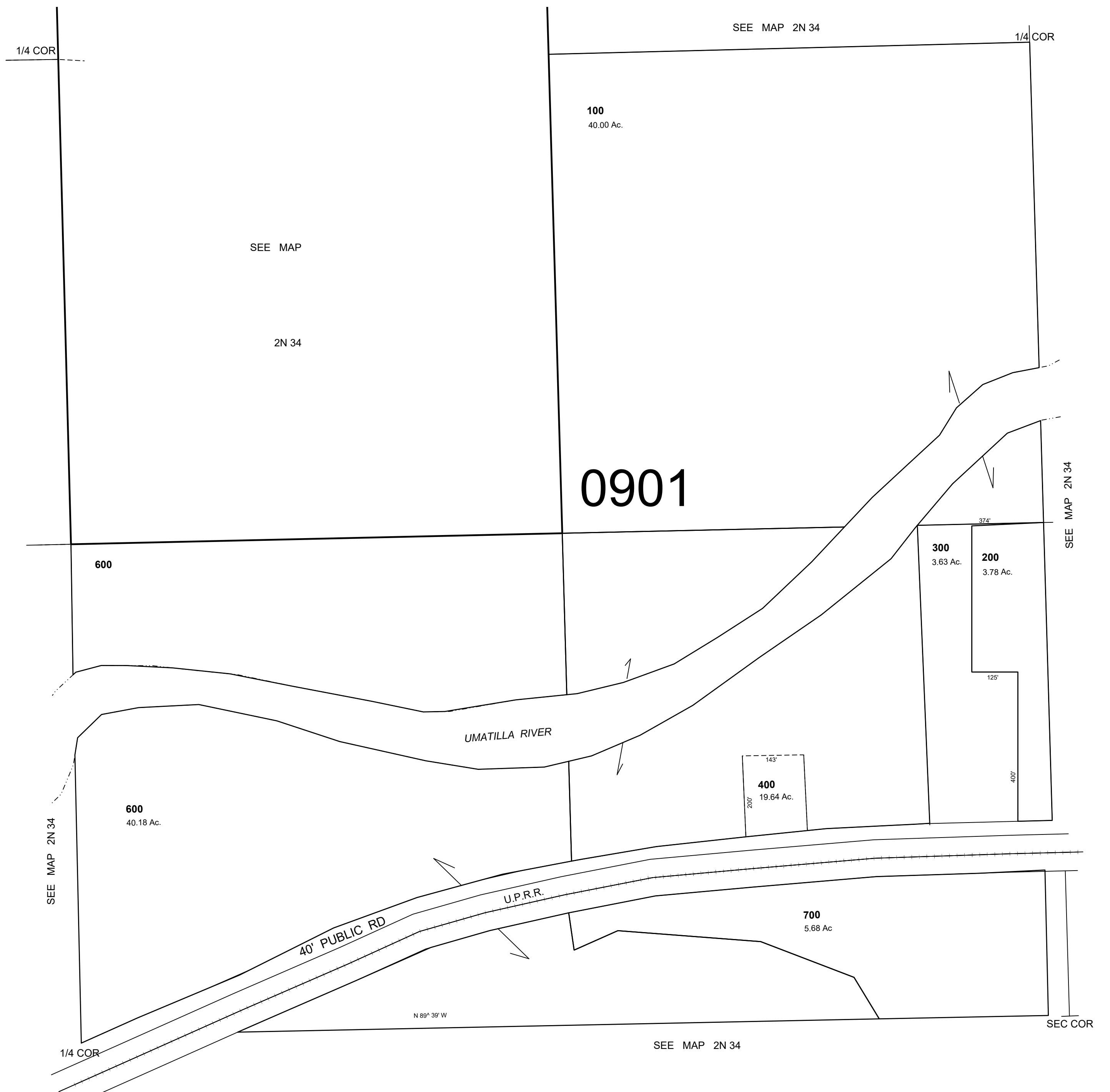


This map was prepared for Assessment & Taxation purposes only and has NOT been prepared for legal, engineering or surveying purposes.

SE 1/4 SEC 5 T2N R34E WM
UMATILLA COUNTY
SCALE 1"=200'

4/1/20

2N 34 05D
AERIAL PHOTO NO. NZ 4P 39-41, 68-71, & 91-95
RESERVATION



2N 34 05D