

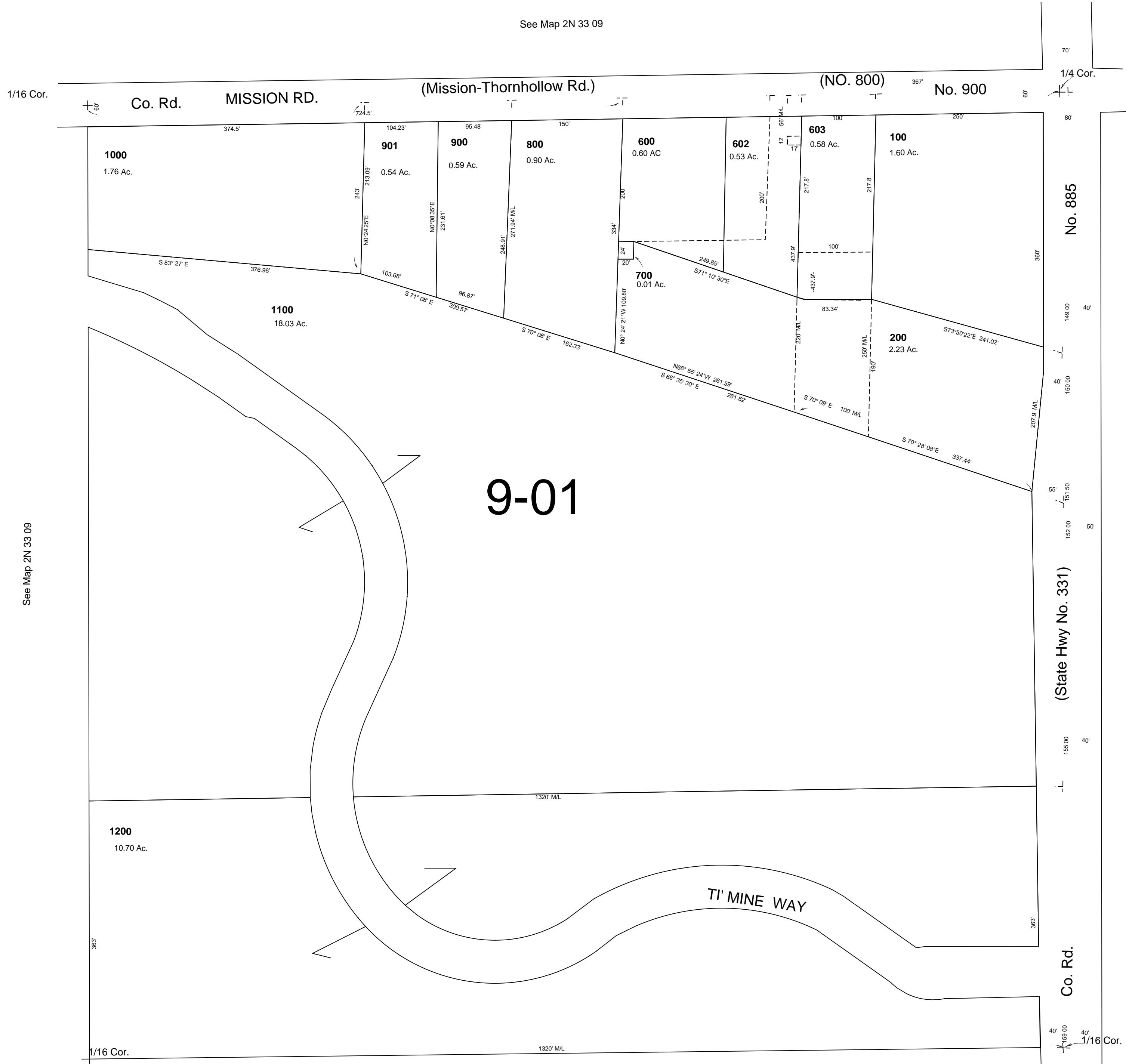
This map was prepared for Assessment & Taxation purposes only and was NOT prepared nor is it suitable for legal, engineering or surveying purposes.

NW1/4 SE1/4 SEC 9 T2NR33E WM UMATILLA COUNTY

2N 33 09DA
RESERVATION

SCALE 1"=100'

See Map 2N 33 09



See Map 2N 33 09

See Map 2N 33 10

See Map 2N 33 09

2N 33 09DA