

This map was prepared for Assessment & Taxation purposes only and was NOT prepared nor is it suitable for legal, engineering or surveying purposes.

NW1/4 SW1/4 SEC 16 T2N R32E WM UMATILLA COUNTY

2N3216CB

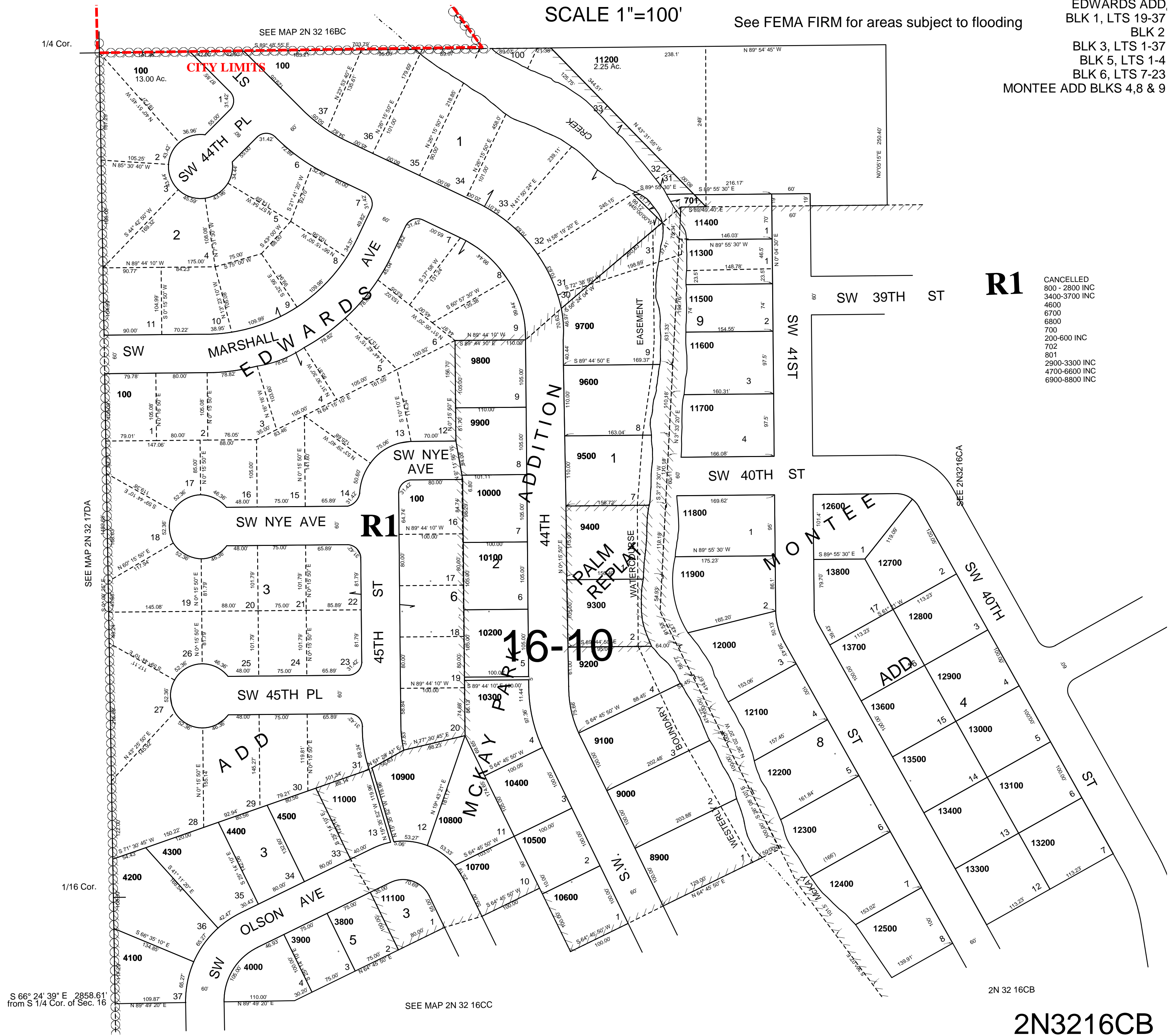
Aerial Photo No. 4P-59

5-3-07

SCALE 1"=100'

See FEMA FIRM for areas subject to flooding

PENDLETON
EDWARDS ADD,
BLK 1, LTS 19-37
BLK 2
BLK 3, LTS 1-37
BLK 5, LTS 1-4
BLK 6, LTS 7-23
MONTEE ADD BLKS 4, 8 & 9



R1

CANCELLED
800-2800 INC
3400-3700 INC
4600
6700
6800
700
200-600 INC
702
801
2900-3300 INC
4700-6600 INC
6900-8800 INC

2N3216CB