

This map was prepared for Assessment & Taxation purposes only and was NOT prepared nor is it suitable for legal, engineering or surveying purposes.

SW1/4 SW1/4 SEC 14 T2N R32E WM

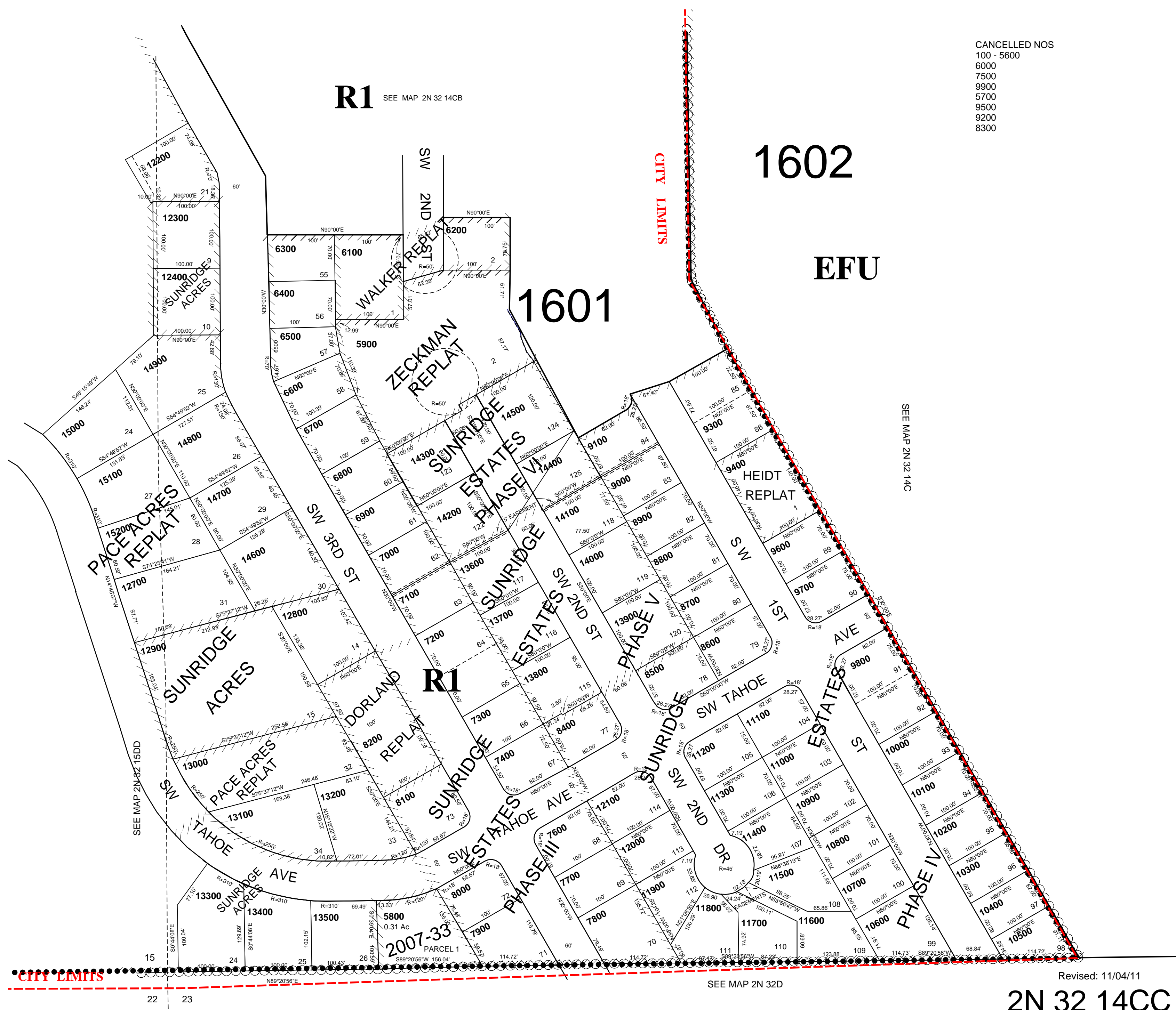
2N 32 14CC

UMATILLA COUNTY

AERIAL PHOTO NO. 4P-60

SCALE 1"=100'

CITY OF PENDLETON



- CANCELLED NOS
- 100 - 5600
 - 6000
 - 7500
 - 9900
 - 5700
 - 9500
 - 9200
 - 8300

Revised: 11/04/11
2N 32 14CC