

This map was prepared for Assessment & Taxation purposes only and was NOT prepared nor is it suitable for legal, engineering or surveying purposes.

NW1/4 SW1/4 SEC 9 T2N R32E WM  
UMATILLA COUNTY  
1"=100'

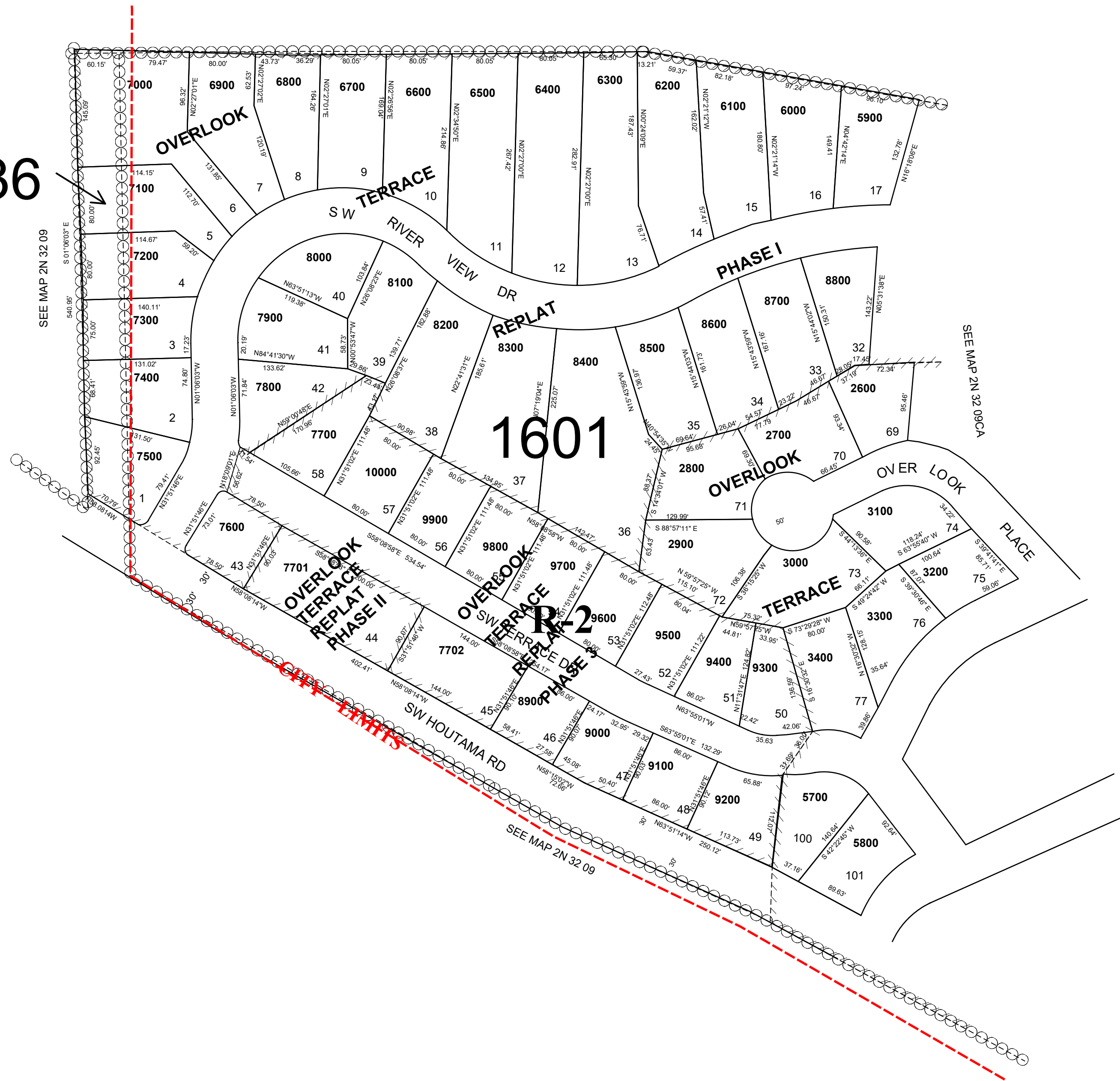
5/19/21

2N 32 09CB

AERIAL PHOTO NO 4P-104

CITY OF PENDLETON

1636



2N 32 09CB