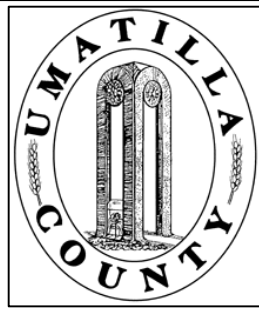


This map was prepared for Assessment purposes only.



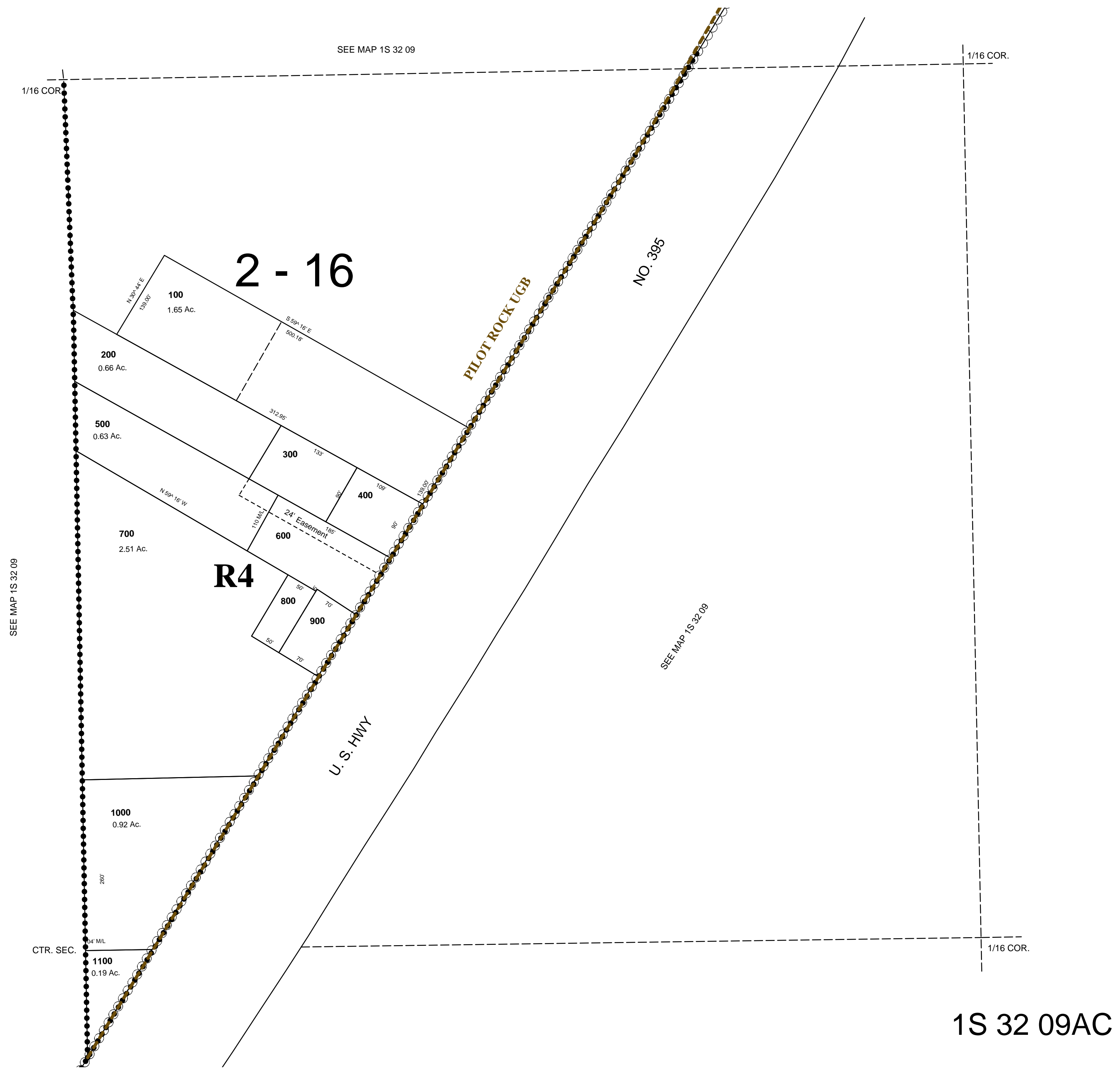
SW1/4 NE1/4 SEC 9 T1S R 32E WM
UMATILLA COUNTY, OR

SCALE: 1" = 100'

4/21/04

1S 32 09AC
PILOT ROCK URBAN GROWTH AREA

AERIAL PHOTO NO. NZ-7P-27



1S 32 09AC