

This map was prepared for assessment purposes

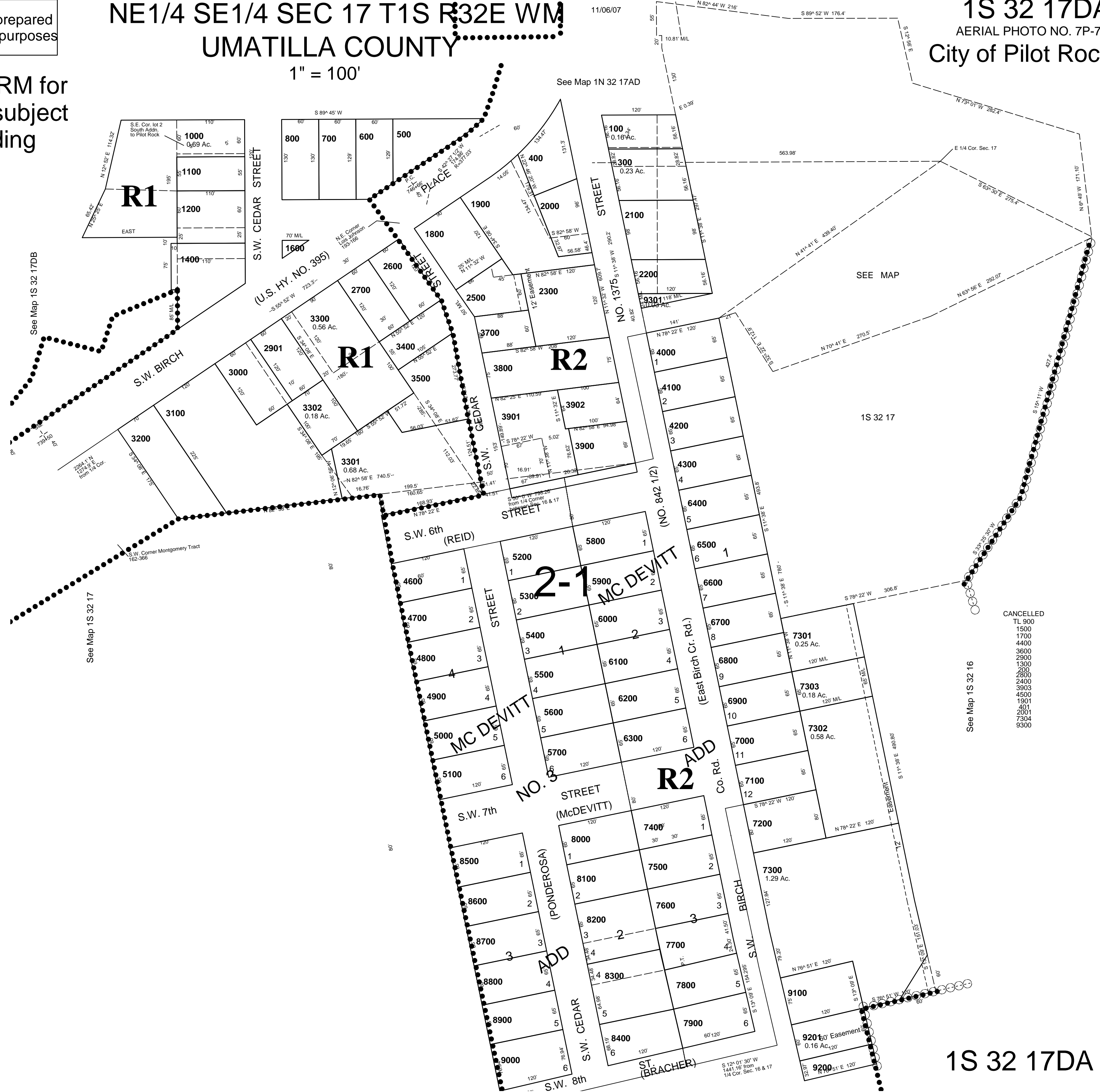
NE1/4 SE1/4 SEC 17 T1S R32E WM UMATILLA COUNTY

1S 32 17DA
AERIAL PHOTO NO. 7P-70
City of Pilot Rock

See FIRM for areas subject to flooding

1" = 100'

11/06/07



- CANCELLED
- TL 900
 - 1500
 - 1700
 - 4400
 - 3800
 - 2900
 - 2800
 - 2400
 - 3903
 - 4500
 - 1901
 - 2001
 - 7304
 - 8300

1S 32 17DA