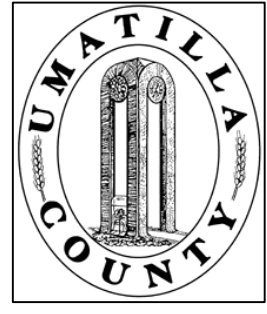


This map was prepared for Assessment and Taxation purposes only and has NOT been prepared for legal, engineering or surveying purposes.



SE1/4 SE1/4 SEC 17 T1S R32E WM 07/07/21

UMATILLA COUNTY, OR

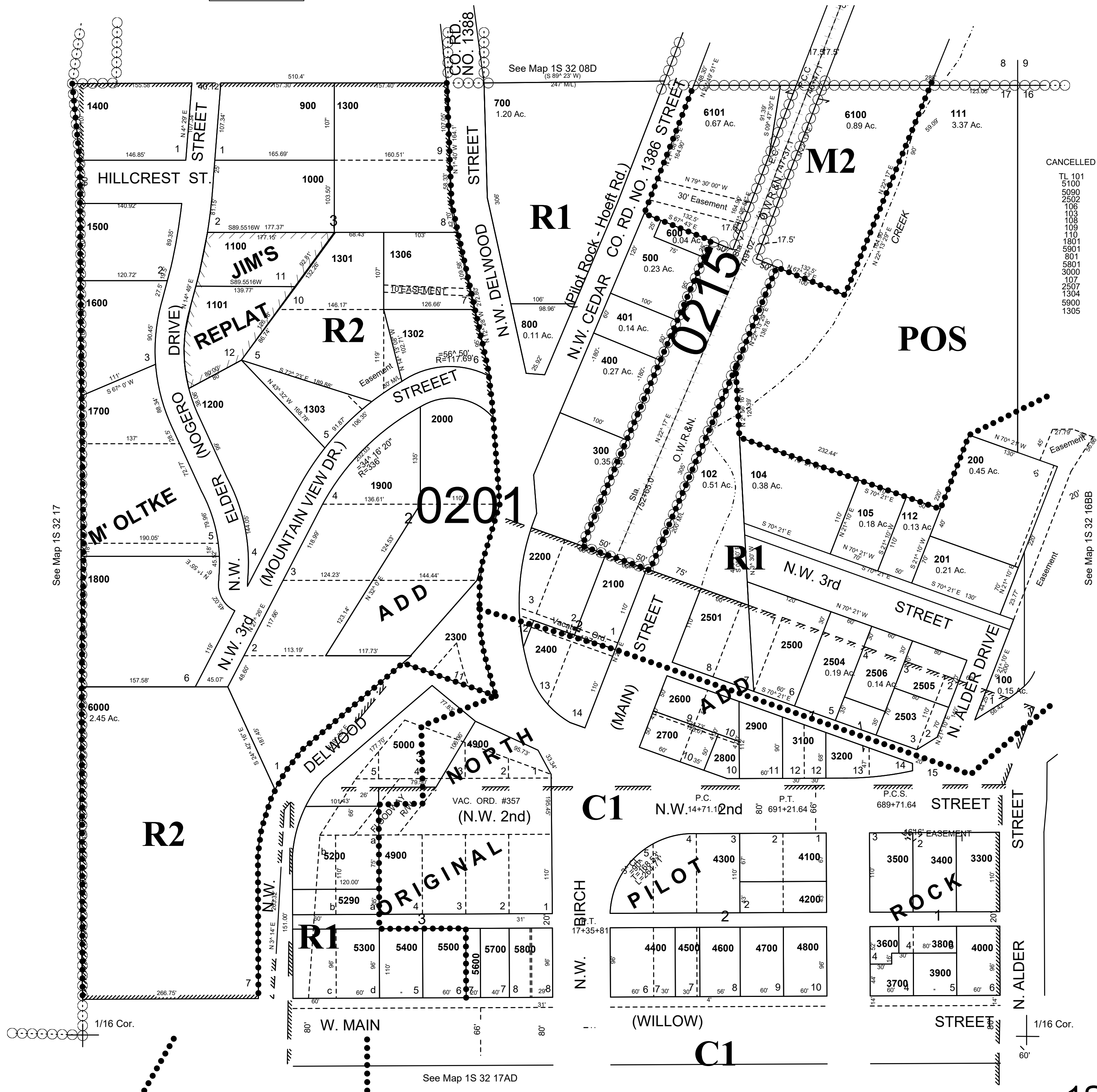
SCALE: 1" = 100'

1S 32 17AA

AERIAL PHOTO NO# NZ-7P-70

City of Pilot Rock

See FIRM for areas subject to flooding



1S 32 17AA