

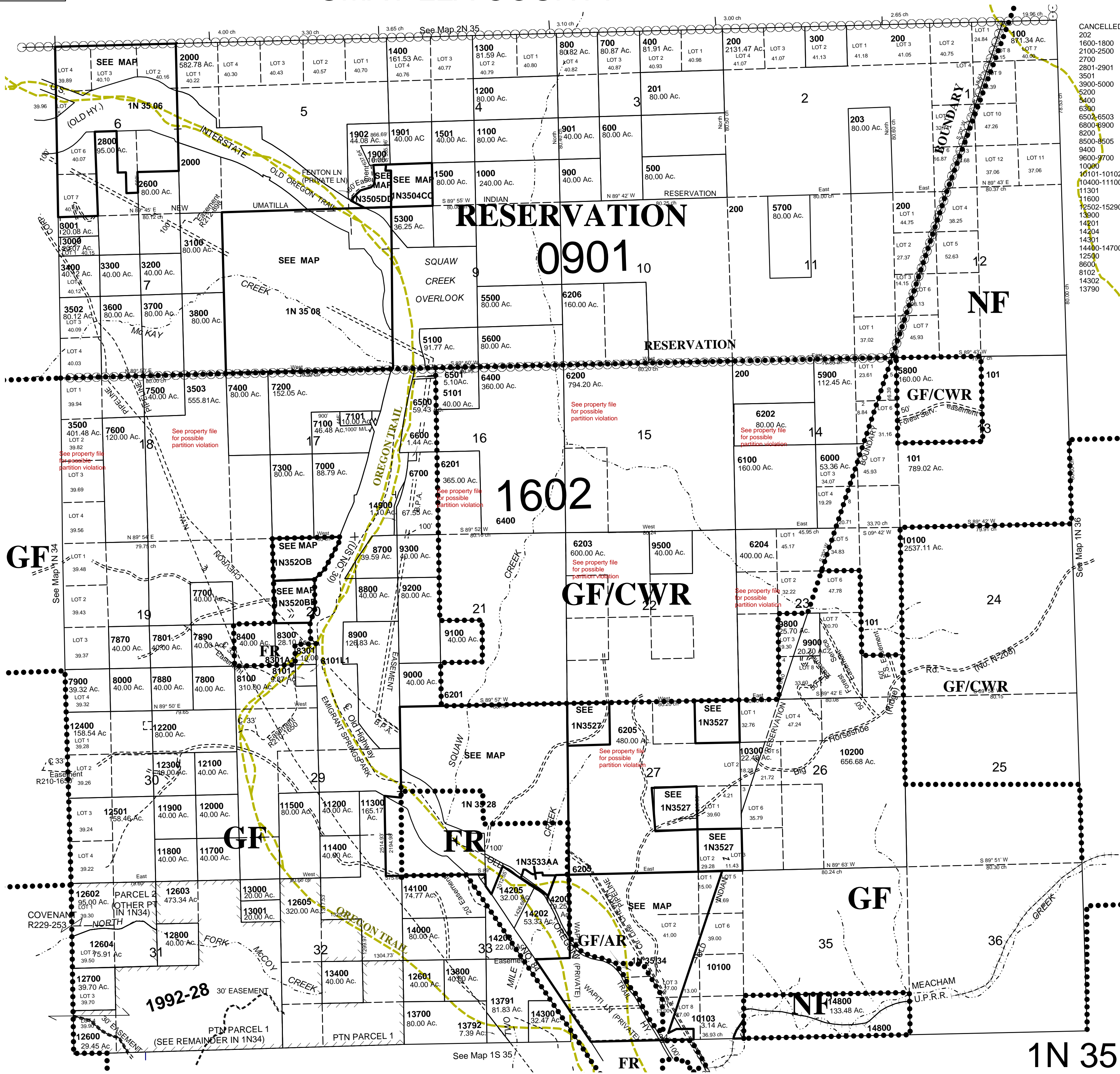
This map was prepared for assessment purposes

T1N R35E WM UMATILLA COUNTY

5/26/05

SCALE 1"=2000'

1N 35



CANCELLED
202
1600-1800
2100-2500
2700
2801-2901
3501
3900-5000
5200
5400
6300
6502-6503
6500-6900
8200
8500-8505
9400
9600-9700
10000
10101-10102
10400-11100
11301
11600
12502-15290
13900
14201
14204
14301
14400-14700
12500
8600
8102
14302
13750