

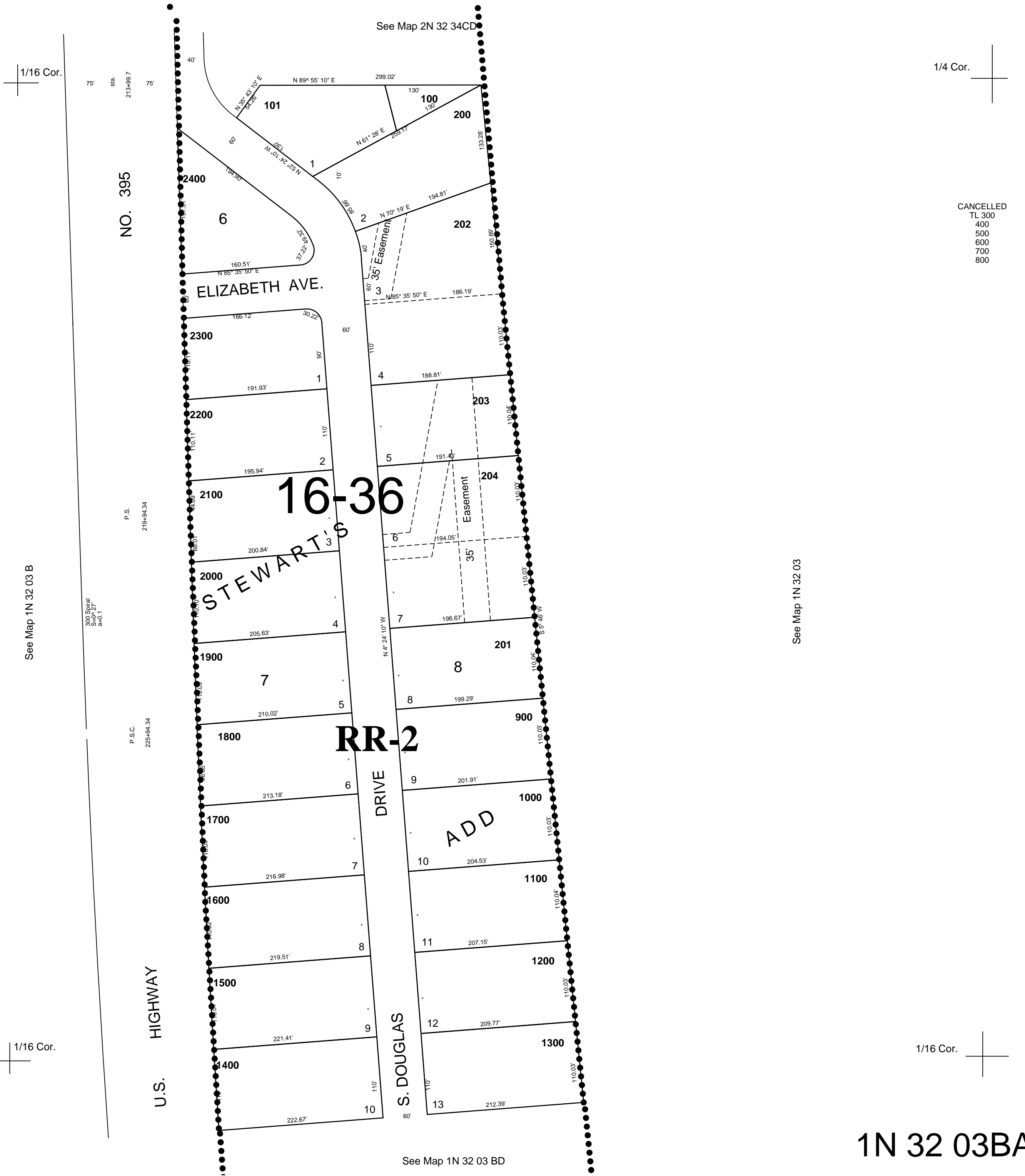
This map was prepared for assessment purposes

NE1/4 NW1/4 SEC 3 T1N R32E WM UMATILLA COUNTY

9-06-06

1N 32 03BA
AERIAL PHOTO NO. 4P-6

SCALE 1"=100'



CANCELLED
TL 300
400
500
600
700
800

1N 32 03BA