

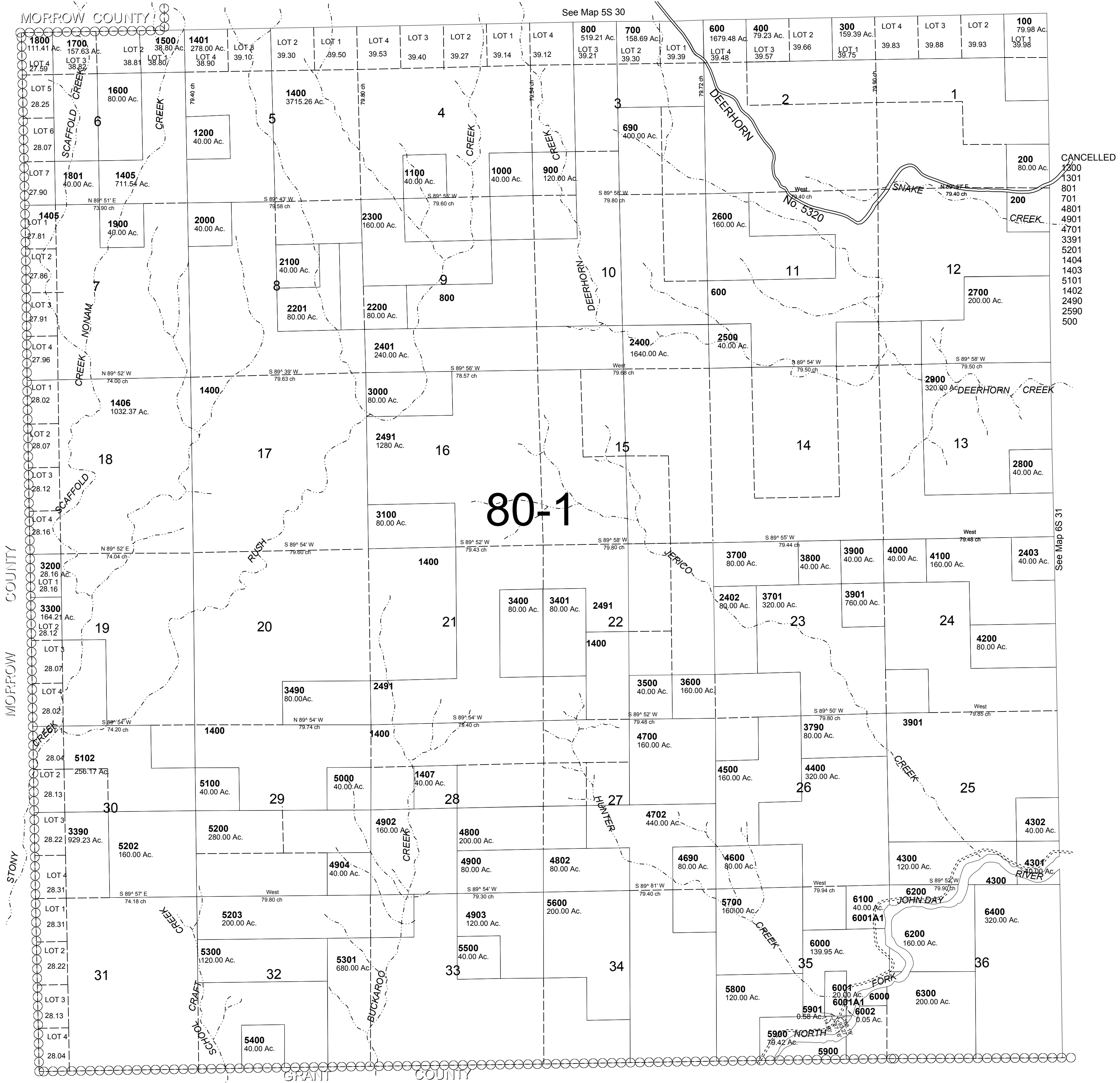
This map was prepared for Assessment & Taxation purposes only and was NOT prepared nor is it suitable for legal, engineering or surveying purposes.

SCALE 1"=2000'

T6S R30E WM UMATILLA COUNTY

6S 30

AERIAL PHOTO NO 9P 12-16, 17-20 & 10P 111-115



REVISED: 03-20-18

6S 30