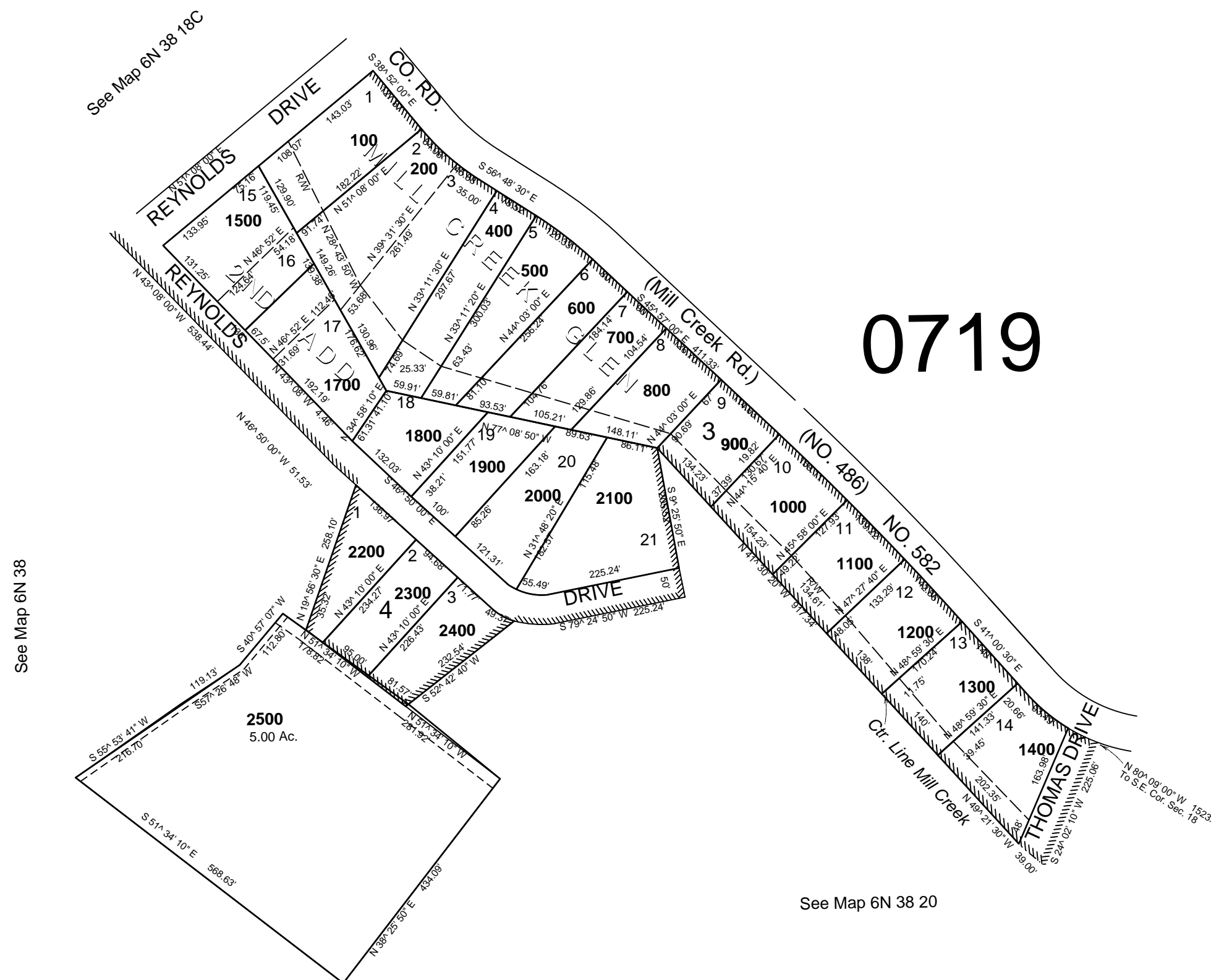


This map was prepared for assessment purposes

SE 1/4 SEC 18 T6N R38E WM
UMATILLA COUNTY
SCALE 1"=200'

6N 38 18D
AERIAL PHOTO NO. NZ 6P-6

See Map 6N 38



See Map 6N 38

See Map 6N 38 20

See Map 6N 38

Revised: 09-08-11

6N 38 18D