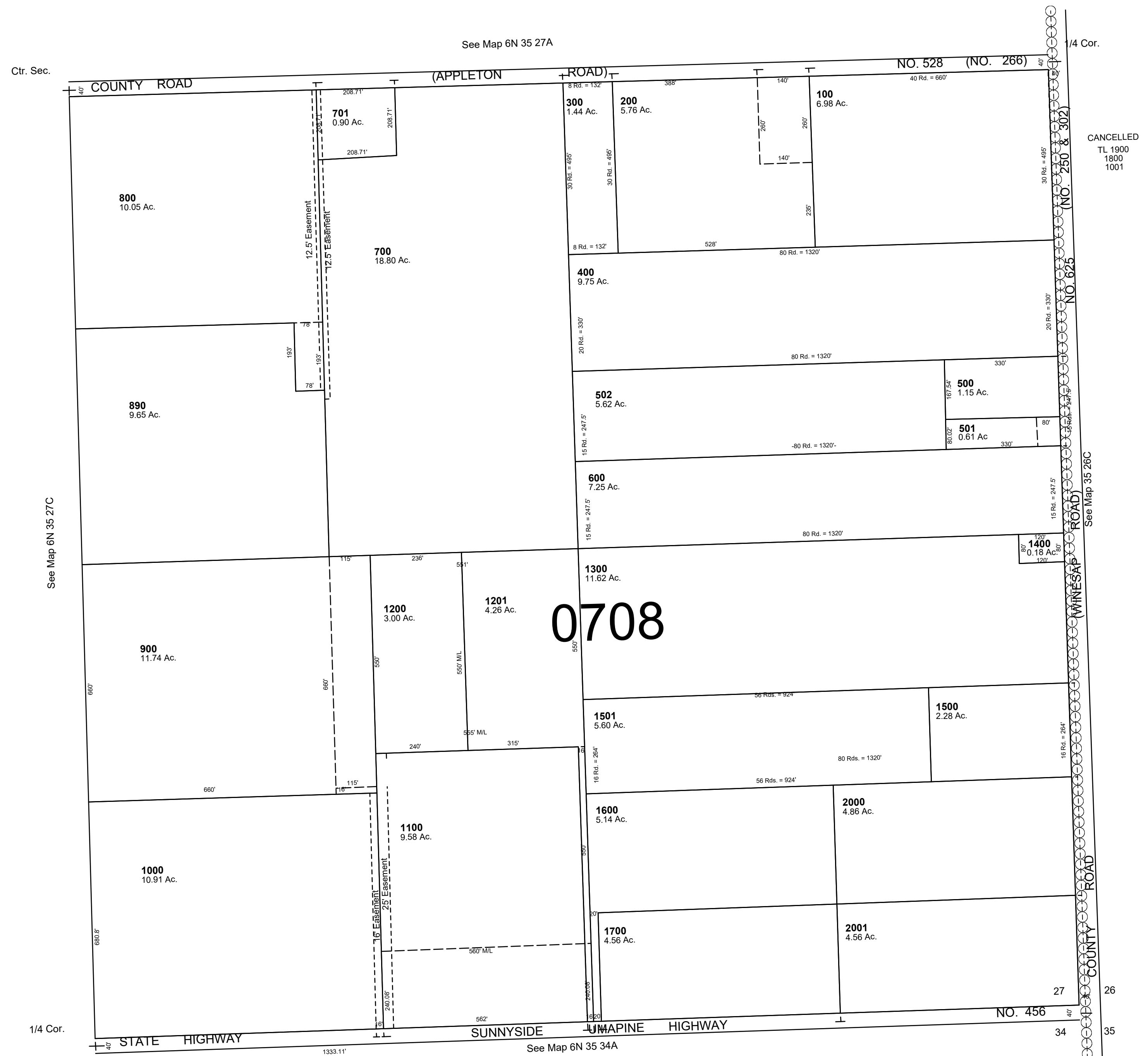


This map was prepared for Assessment & Taxation purposes only and was NOT prepared nor is it suitable for legal, engineering or surveying purposes.

SE1/4 SEC 27 T6N R35E WM
UMATILLA COUNTY
1"=200'

6N 35 27D
AERIAL PHOTO NO. NZ 6P-62



REVISED: 09-08-2021

6N 35 27D