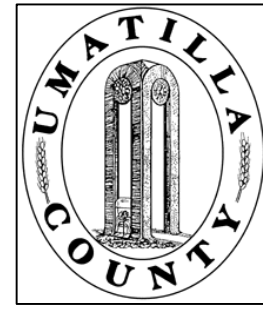


This map was prepared for Assessment & Taxation purposes only and was NOT prepared nor is it suitable for legal, engineering or surveying purposes.

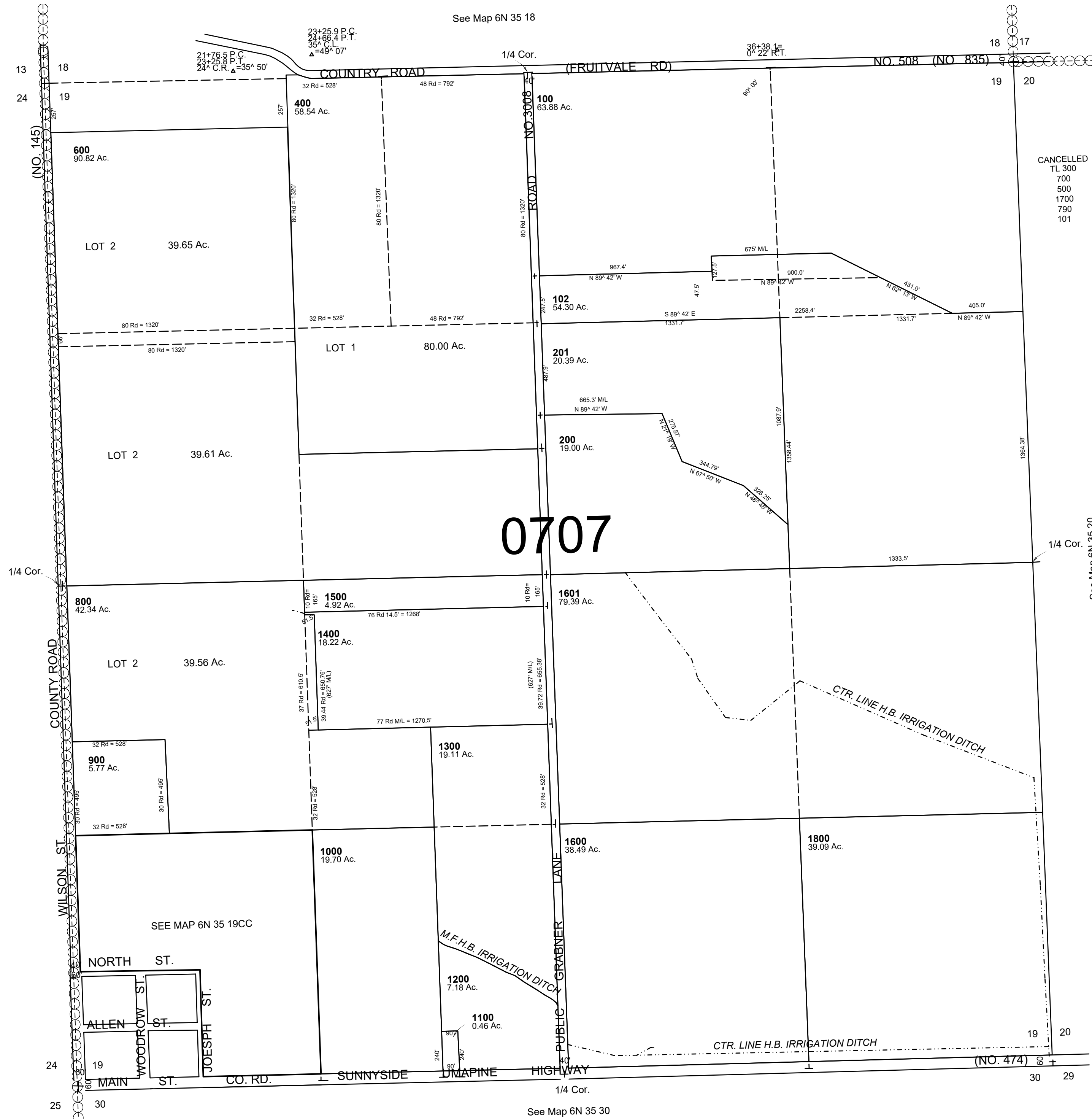


SEC 19 T6N R 35E WM UMATILLA COUNTY

SCALE: 1" = 400'

6N 35 19

AERIAL PHOTO NO. NZ-6P-21



REVISED: 09-09-2021

6N 35 19