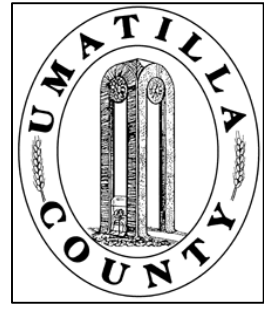


This map was prepared for Assessment & Taxation purposes only and was NOT prepared for, nor is it suitable for legal, engineering or surveying purposes.

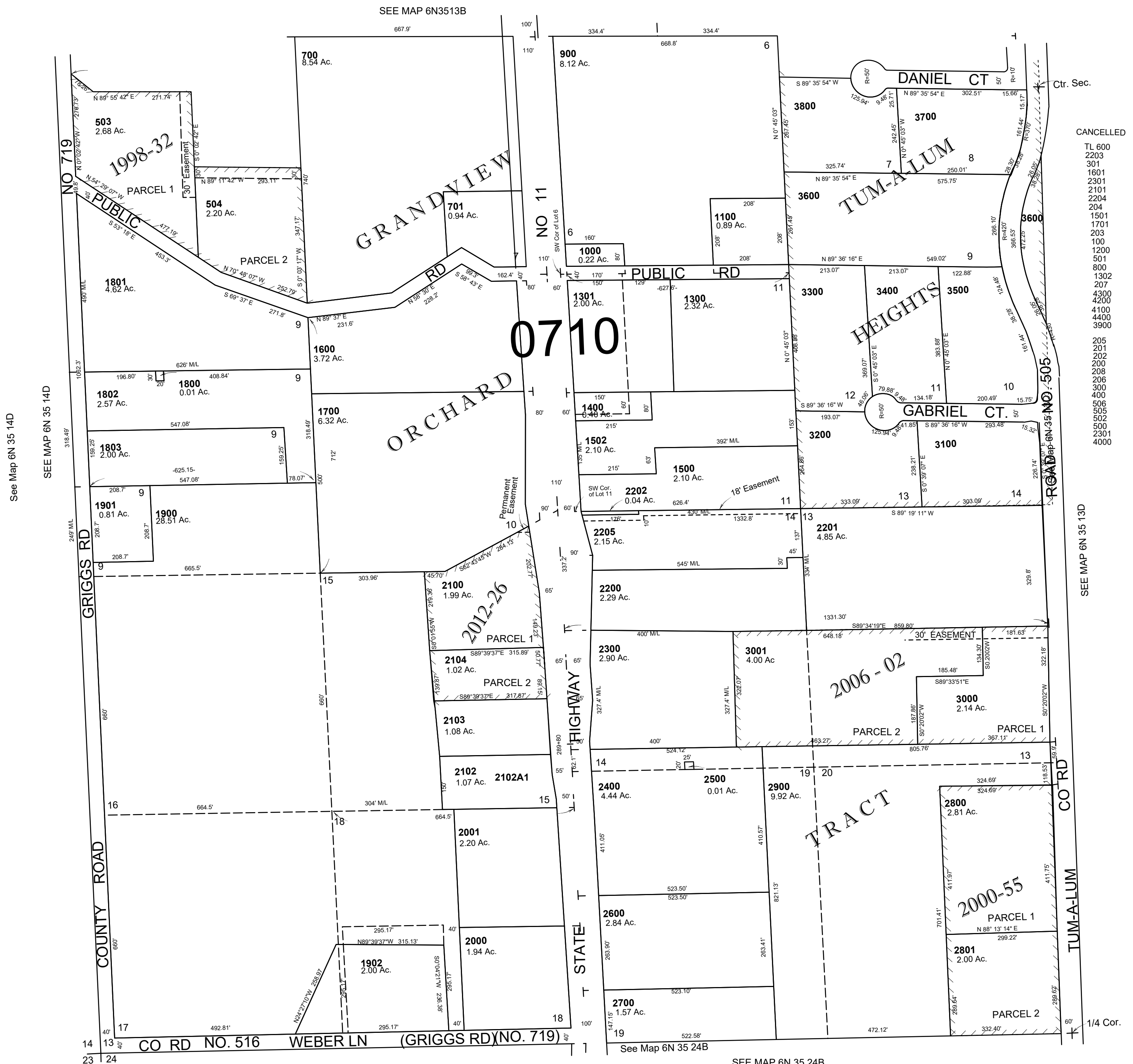


SW 1/4 SEC 13 T 6N R 35E WM UMATILLA COUNTY

6N3513C

SCALE: 1" = 200'

AERIAL PHOTO NO. NZ-6P-17



CANCELLED
TL 600
2203
301
1601
2301
2101
2204
204
1501
1701
1302
100
1200
501
800
1302
207
4300
4200
4100
4400
3900
205
201
202
203
208
206
300
400
506
505
502
500
2301
4000

See Map 6N 35 14D

SEE MAP 6N3513B

SEE MAP 6N 35 14D

SEE MAP 6N 35 13D

SEE MAP 6N 35 24B

REVISED: 09-09-2021

6N3513C