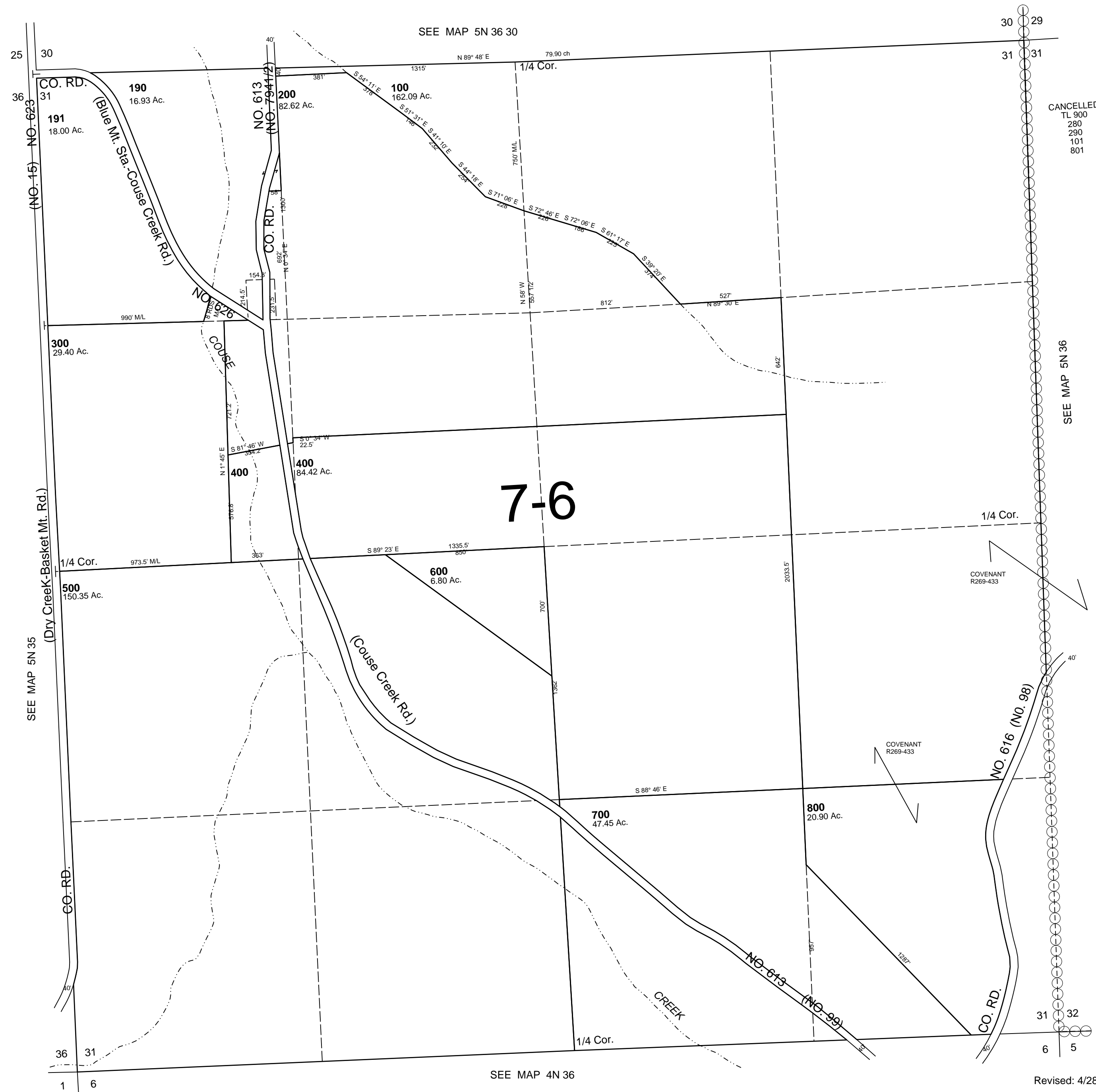


This map was prepared for Assessment & Taxation purposes only and was NOT prepared nor is it suitable for legal, engineering or surveying purposes.

SEC 31 T5N R36E WM  
UMATILLA COUNTY  
SCALE 1"=400'

5N 36 31  
AERIAL PHOTO NO. 5P-16



Revised: 4/28/11  
5N 36 31