

This map was prepared for assessment purposes

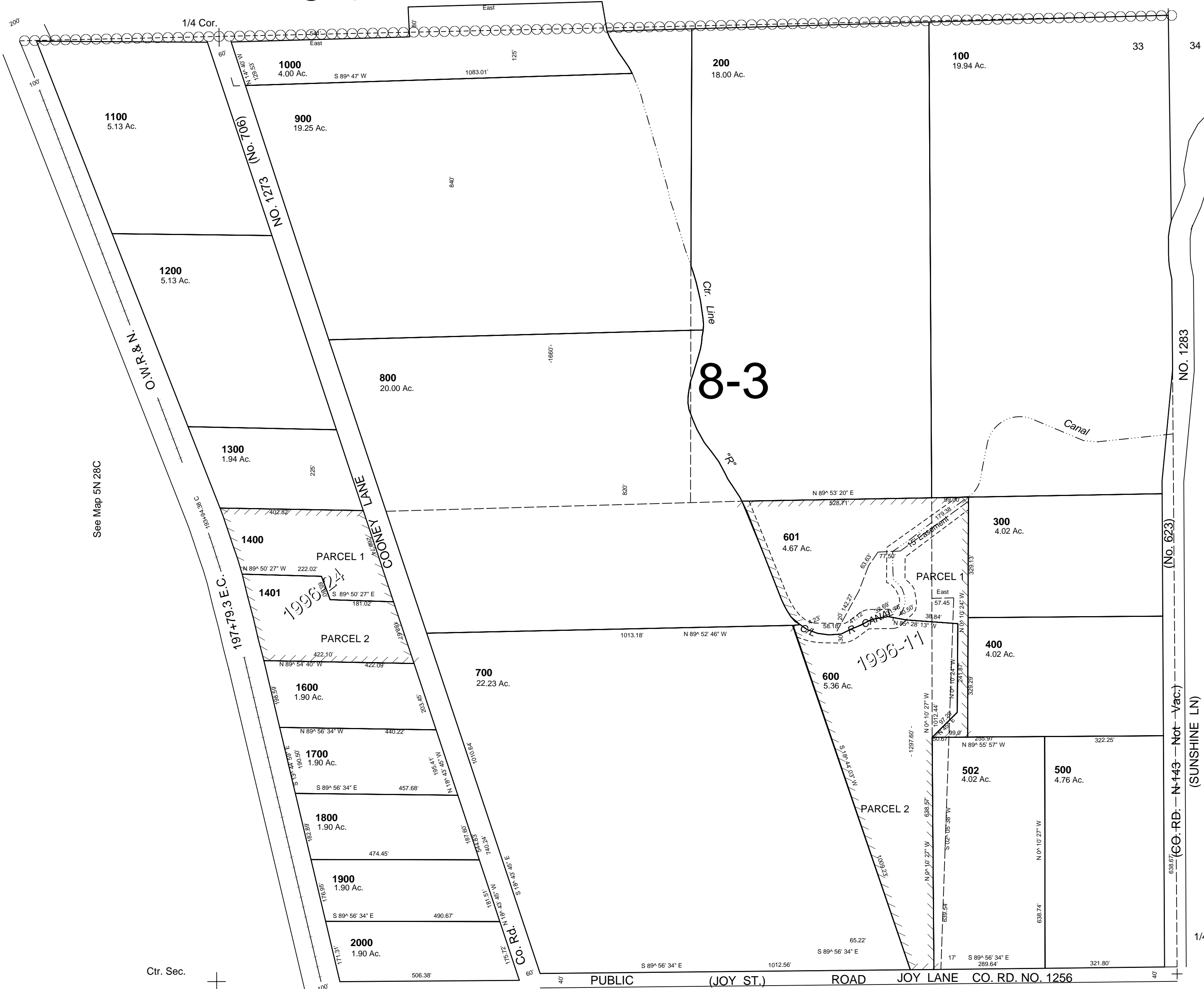
NE1/4 SEC 33 T5N R28E WM  
 UMATILLA COUNTY  
 SCALE 1"=200'

9/25/06

5N 28 33A  
 AERIAL PHOTO NO. 1P-105

6-3

28 27



See Map 5N 28 28D

See Map 5N 28C

See Map 5N 28 34B

CANCELLED  
 TL 502  
 401  
 1500

See Map 4N 28 33D

5N 28 33A