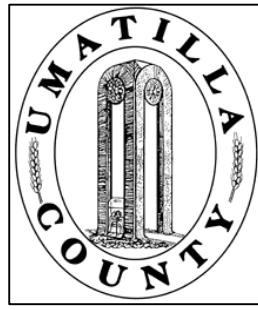


This map was prepared for Assessment & Taxation purposes only and was NOT prepared nor is it suitable for legal, engineering or surveying purposes.

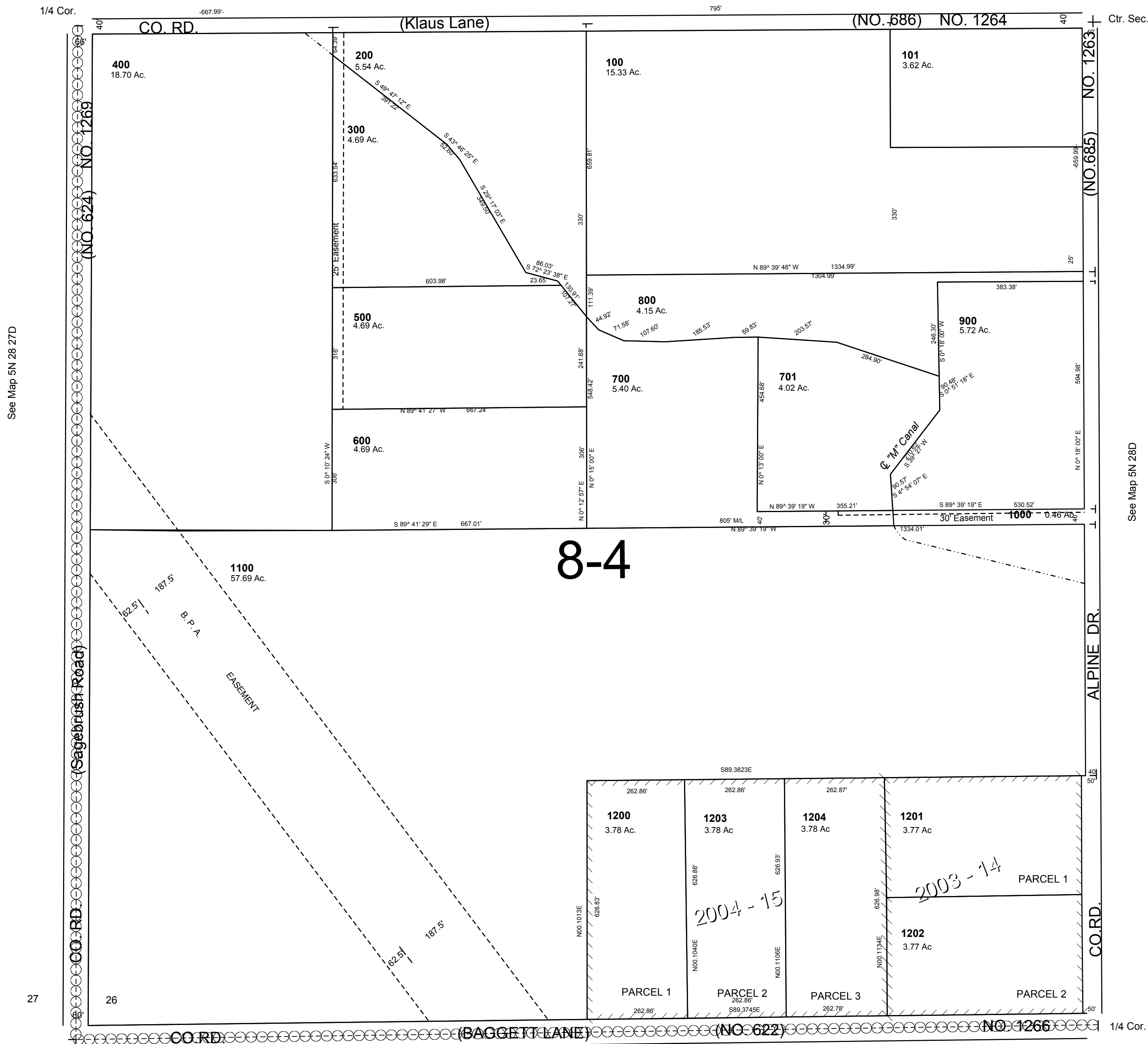


SW 1/4 SEC 26 T 5N R 28 E WM
UMATILLA COUNTY
SCALE: 1" = 200'

5N2826C

AERIAL PHOTO NO. 1P-103

See Map 5N 28D



27

34

35

5N2826C