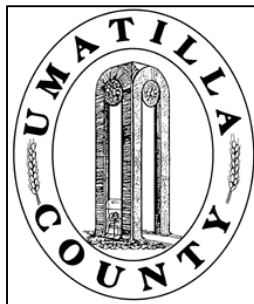


This map was prepared for Assessment & Taxation purposes only and was NOT prepared nor is it suitable for legal, engineering or surveying purposes.



NE1/4 SE1/4 SEC 18 T5N R28E WM

5N2818DA

UMATILLA COUNTY

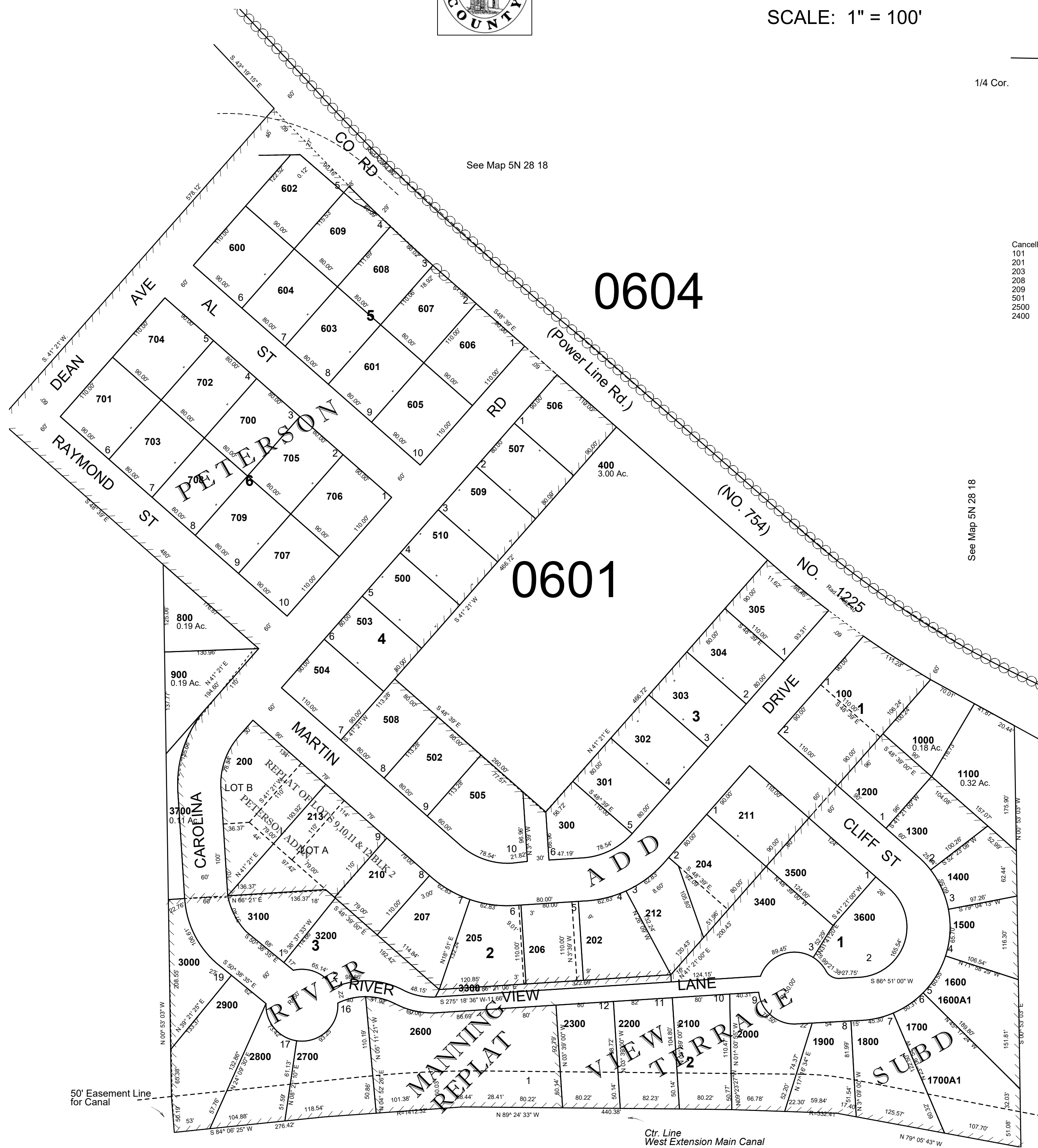
SCALE: 1" = 100'

RIVER VIEW TERRACE SUBD.

1/4 Cor. REPLAT OF LOTS 9,10,11,12 BLK 2 PETERSON ADDN.

See Map 5N 28 18

Cancelled No
101
201
203
208
209
501
2500
2400



0604

0601

Revised: 07-06-2021

5N2818DA