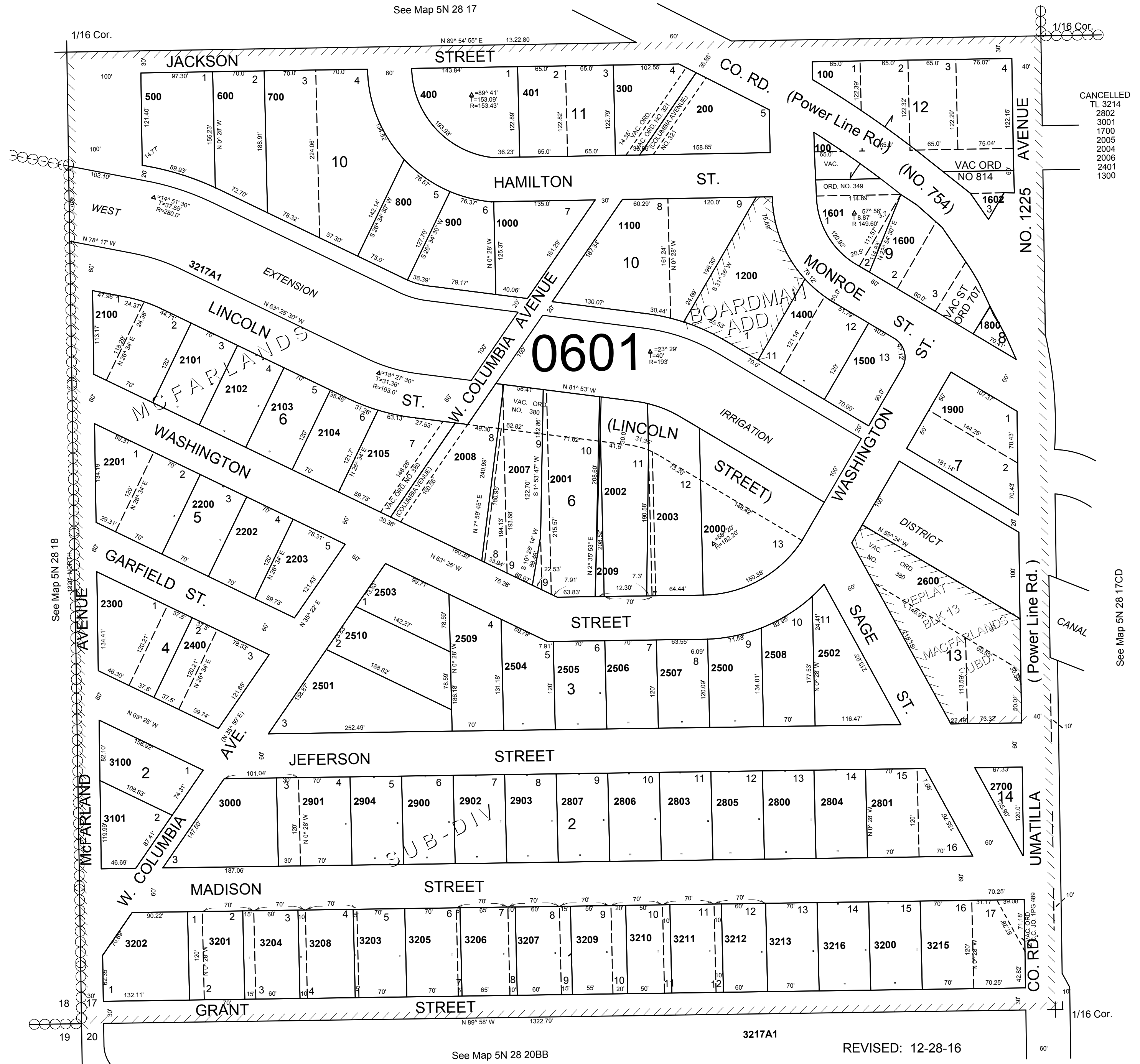


This map was prepared for Assessment & Taxation purposes only and was NOT prepared nor is it suitable for legal, engineering or surveying purposes.

SW 1/4 SW 1/4 SEC 17 T5N R28E WM  
UMATILLA COUNTY  
1"=100'

5N 28 17CC  
AERIAL PHOTO NO. 1P-57



CANCELLED  
TL 3214  
2802  
3001  
1700  
2005  
2004  
2006  
2401  
1300

5N 28 17CC

REVISED: 12-28-16

See Map 5N 28 20BB

See Map 5N 28 18

See Map 5N 28 17CD

3217A1