

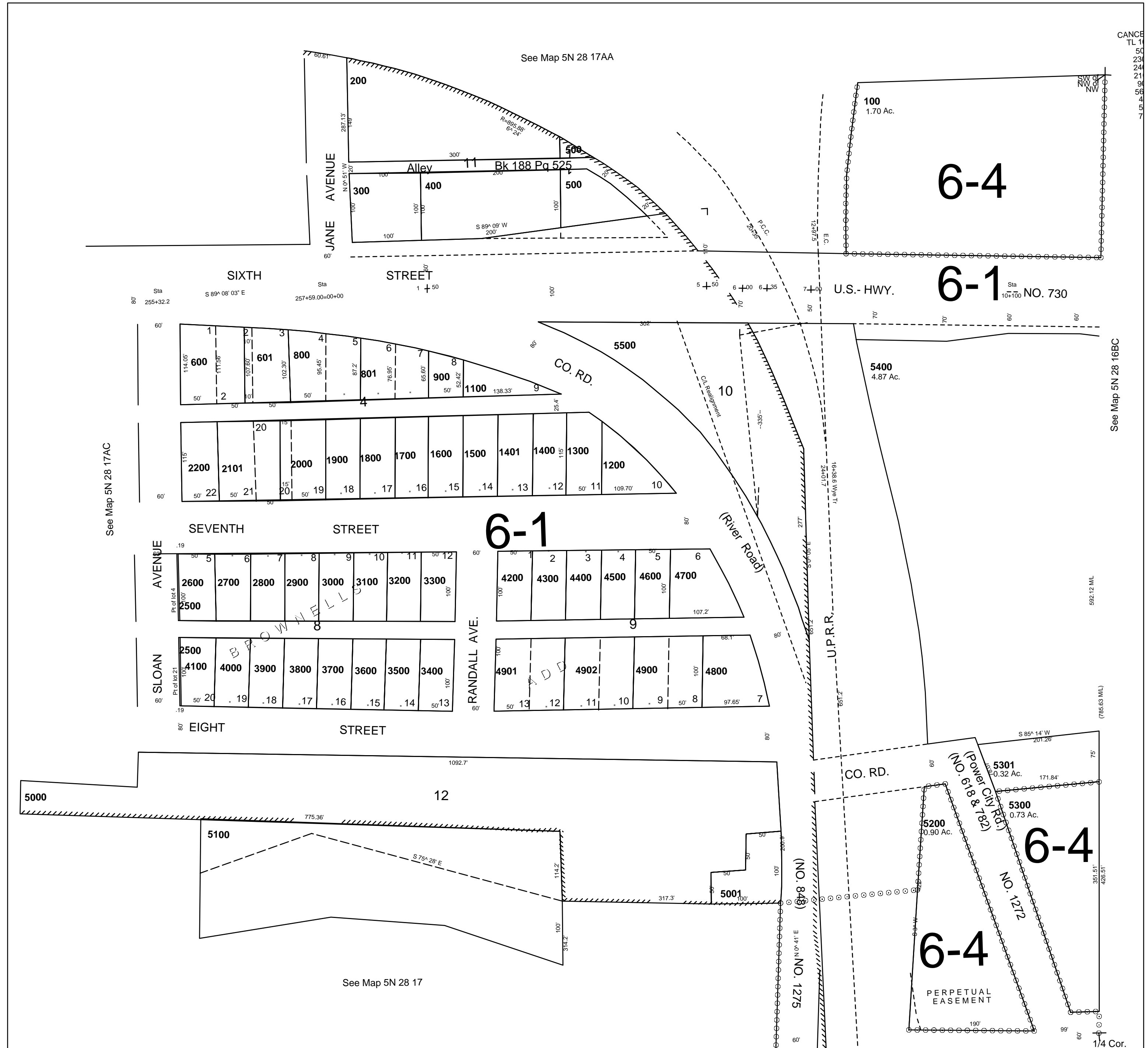
This map was prepared for assessment purposes

SE1/4 NE1/4 SEC 17 T5N R28E WM UMATILLA COUNTY

12/15/05

5N 28 17AD
AERIAL PHOTO NO. NZ 1P-78

1"=100'



CANCEL
TL 11
50
23
24
21
9
56
6
5
7

See Map 5N 28 16BC

See Map 5N 28 17AC

See Map 5N 28 17

5N 28 17AD