

This map was prepared for Assessment & Taxation purposes only and was NOT prepared nor is it suitable for legal, engineering or surveying purposes.

SEC 22 T5N R36E WM UMATILLA COUNTY

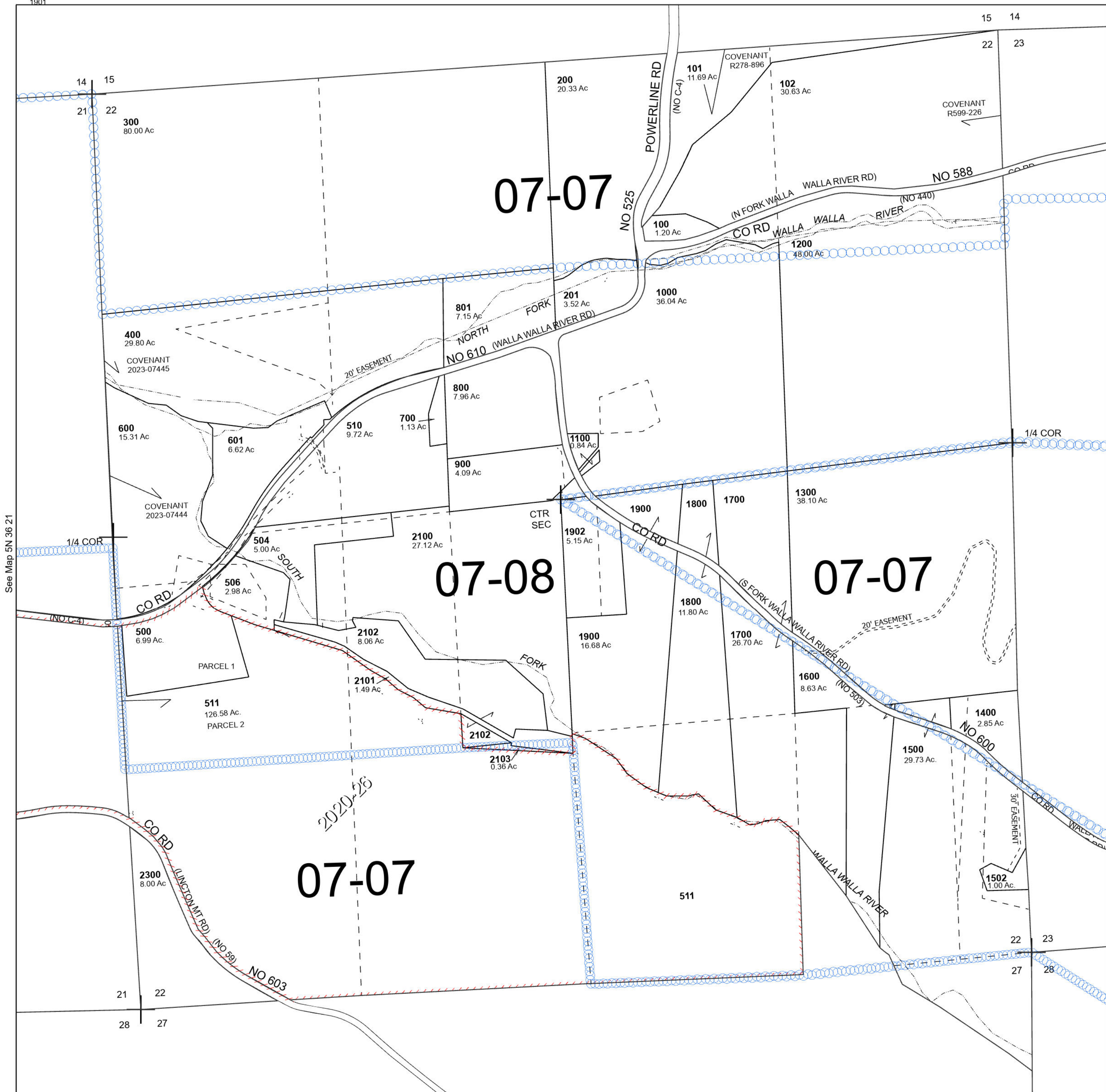
5N 36 22

SCALE 1" = 400'

See Map 5N 36

Cancelled Tax Lots

- 501 2000
- 502 2200
- 503
- 505
- 507
- 508
- 509
- 802
- 1501
- 1901



See Map 5N 36 21

See Map 5N 36 23

5N 36 22