

This map was prepared for Assessment & Taxation purposes only and was NOT prepared nor is it suitable for legal, engineering or surveying purposes.

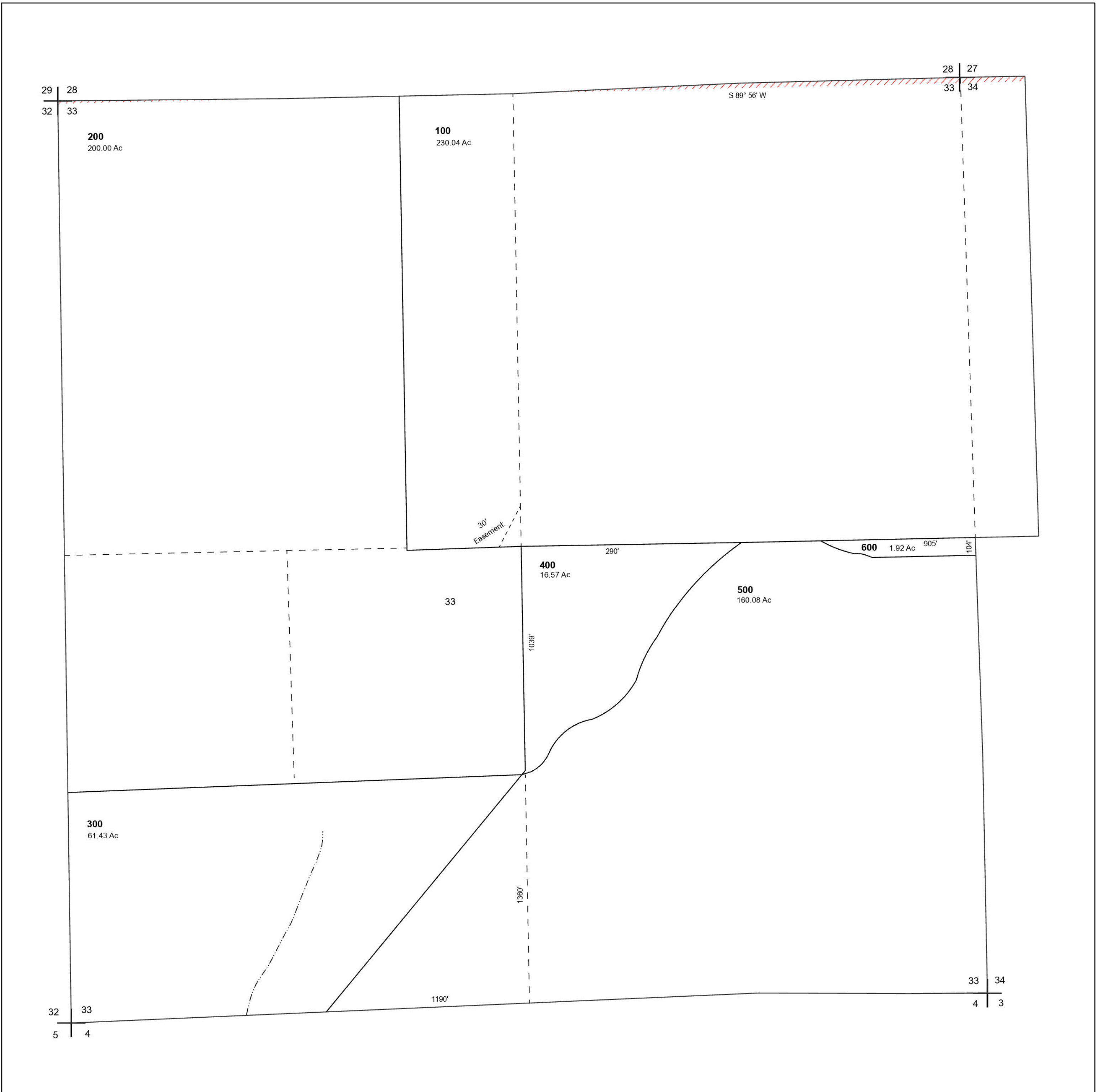
Cancelled Tax Lots

SEC 33 T5N R33E WM UMATILLA COUNTY

5N 33 33

SCALE 1" = 400'

See Map 5N 33



See Map 5N 33

See Map 5N 33

Revised 11/13/2023

See Map 4N 33

5N 33 33