

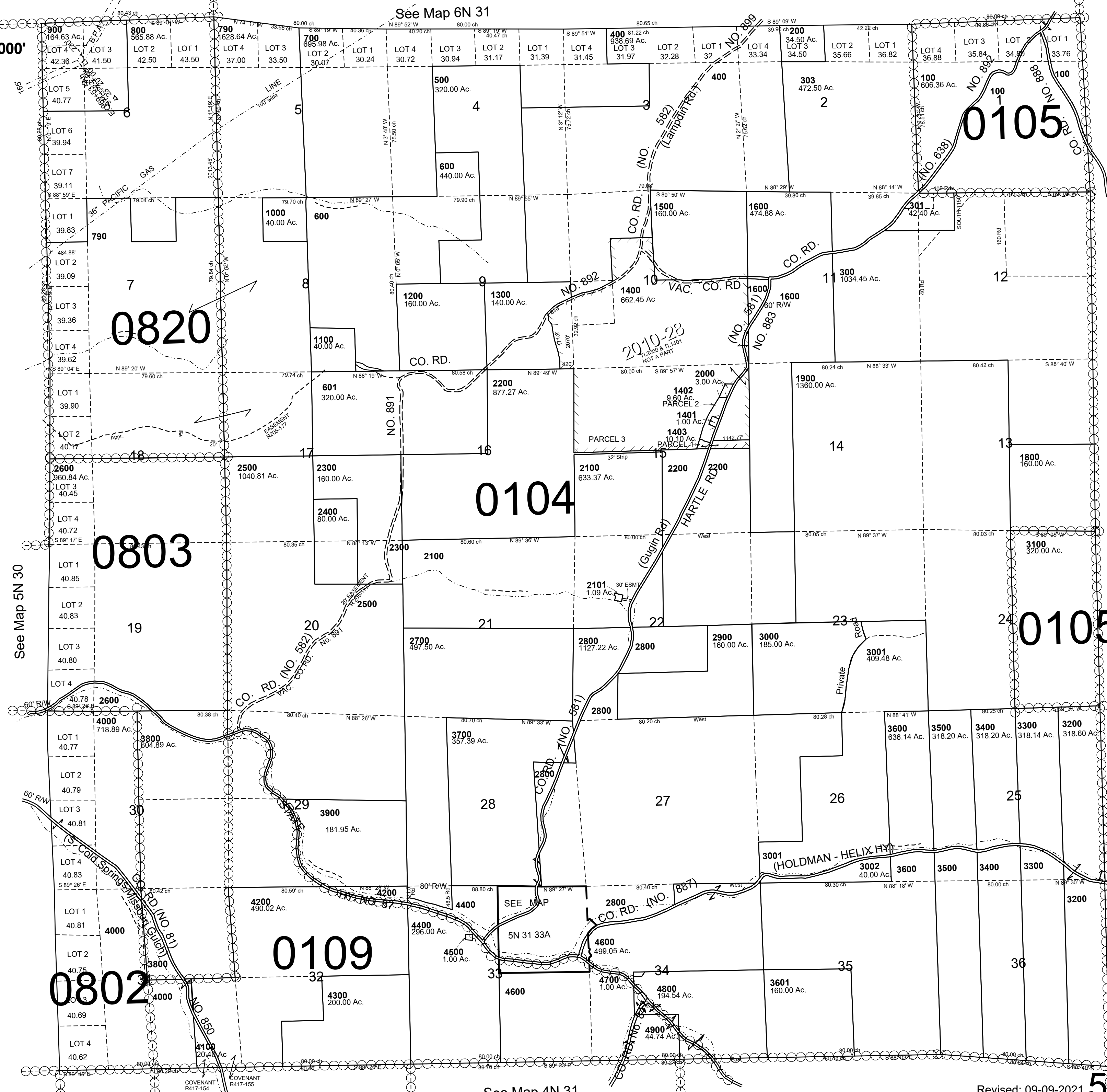
This map was prepared for Assessment & Taxation purposes only and was NOT prepared nor is it suitable for legal, engineering or surveying purposes.

T5NR31E WM UMATILLA COUNTY

AERIAL PHOTO NO. NZ 1P 73-78
**5N 31
& INDEX**

CANCELLED NO:
1700
302
4400A1

SCALE: 1" = 2000'



See Map 5N 30

See Map 4N 31

See Map 5N 32

Revised: 09-09-2021

5N 31