

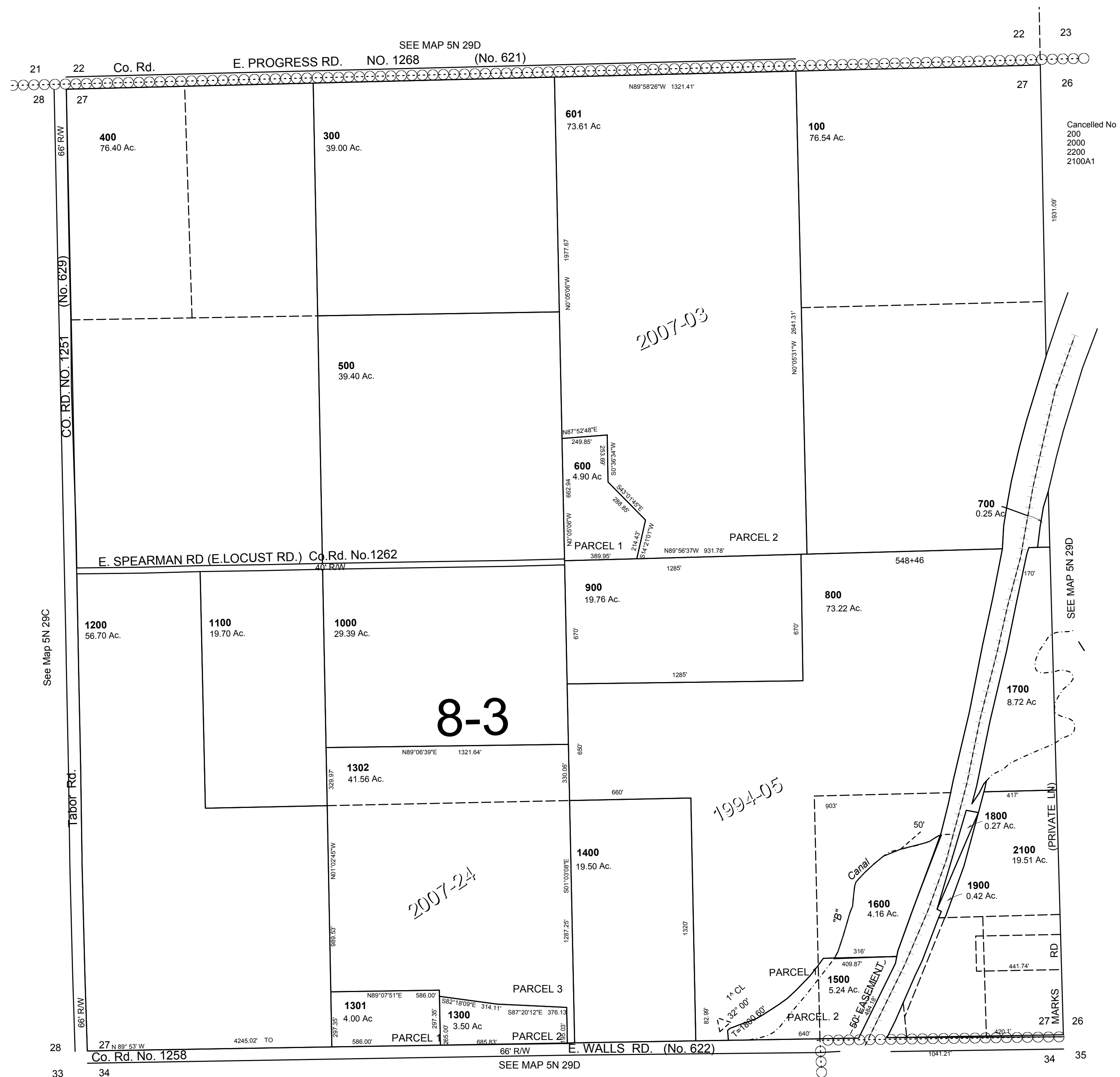
This map was prepared for Assessment & Taxation purposes only and was NOT prepared nor is it suitable for legal, engineering or surveying purposes.

SEC 27 T5N R29E WM UMATILLA COUNTY

1"=400'

5N 29 27

AERIAL PHOTO NO. 1P 63-67 & 95-99



Revised: 02-21-17

5N 29 27