

This map was prepared for Assessment & Taxation purposes only and was NOT prepared nor is it suitable for legal, engineering or surveying purposes.

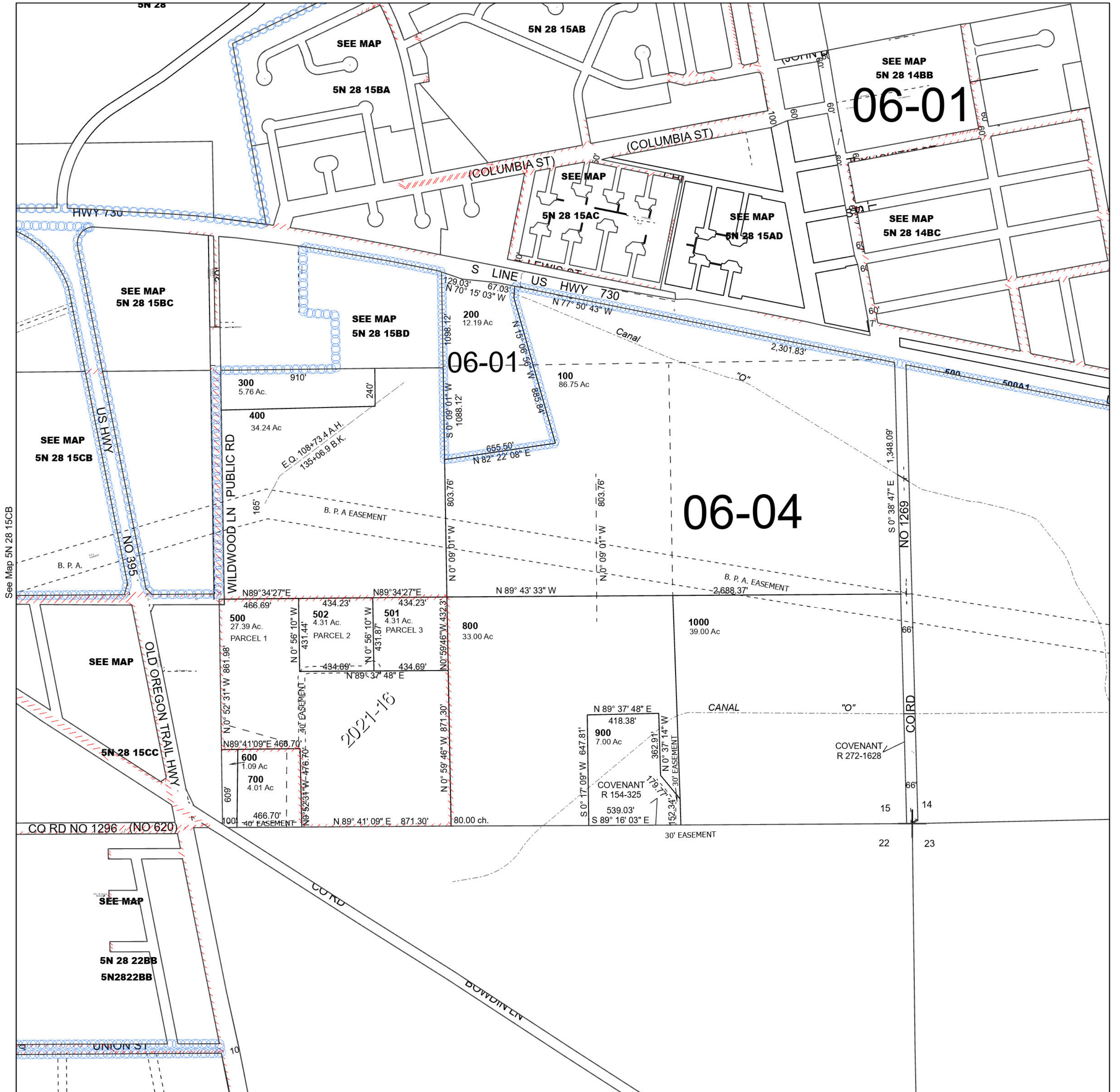
Cancelled Tax Lots

# SEC 15 T5N R28E WM UMATILLA COUNTY

## 5N 28 15

SCALE 1" = 400'

See Map 5N 28 15AD



See Map 5N 28 15CB

See Map 5N 28 14

Revised 12/7/2023

See Map 5N 28 22

## 5N 28 15