

This map was prepared for Assessment & Taxation purposes only and was NOT prepared nor is it suitable for legal, engineering or surveying purposes.

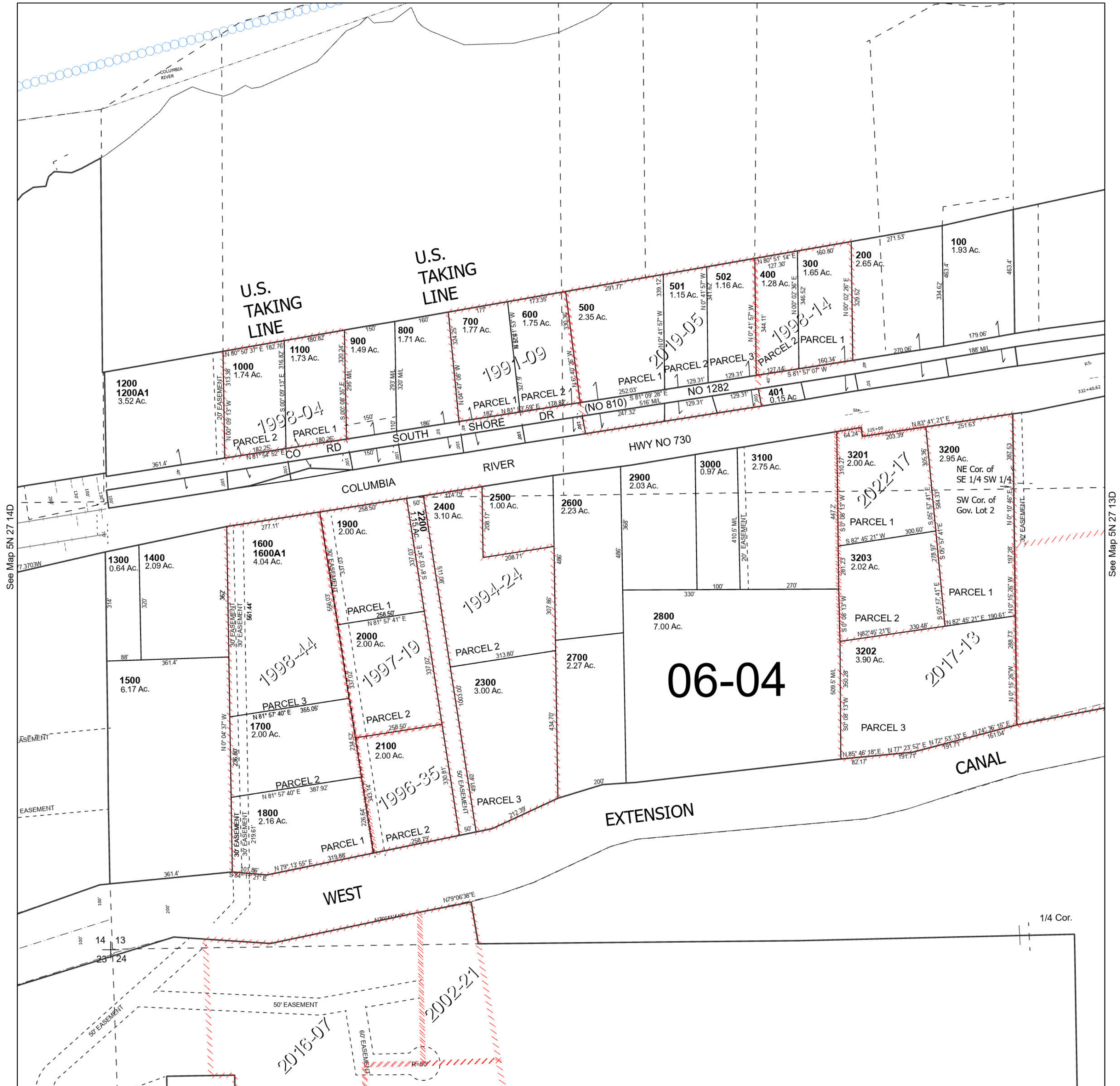
Cancelled Tax Lots

SW 1/4 SEC 13 T5N R27E WM UMATILLA COUNTY

5N 27 13C

SCALE 1" = 200'

See Map 5N 27 13



Revised 5/26/2023

See Map 5N 27 13

5N 27 13C