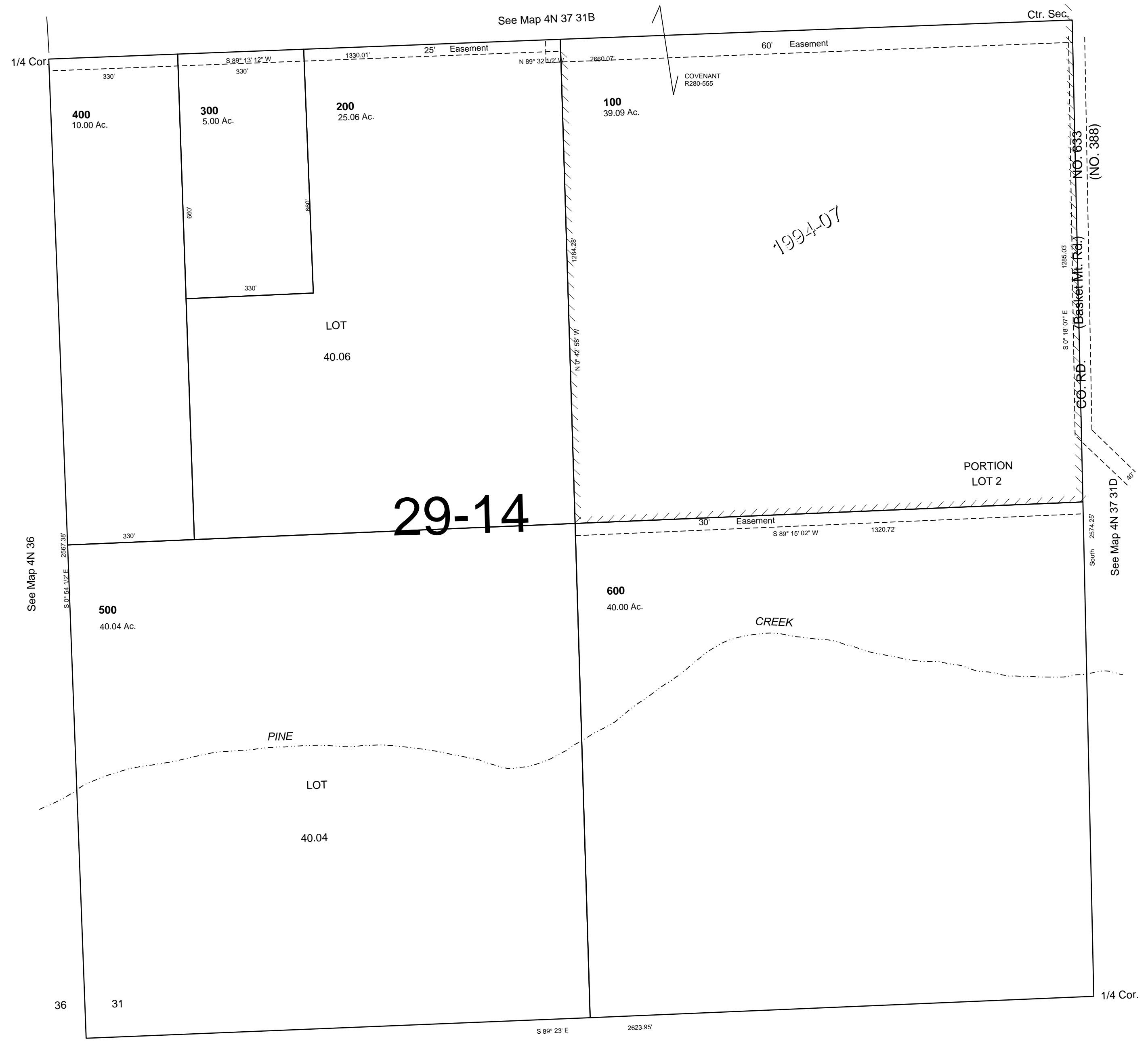


This map was prepared for Assessment & Taxation purposes only and was NOT prepared nor is it suitable for legal, engineering or surveying purposes.

SW1/4 SEC 31 T4N R37E WM
UMATILLA COUNTY
SCALE 1"=200'

4N 37 31C
AERIAL PHOTO NO., 9P-38 & 39



29-14

1 6

See Map 3N 37

Revised: 4/29/11
4N 37 31C