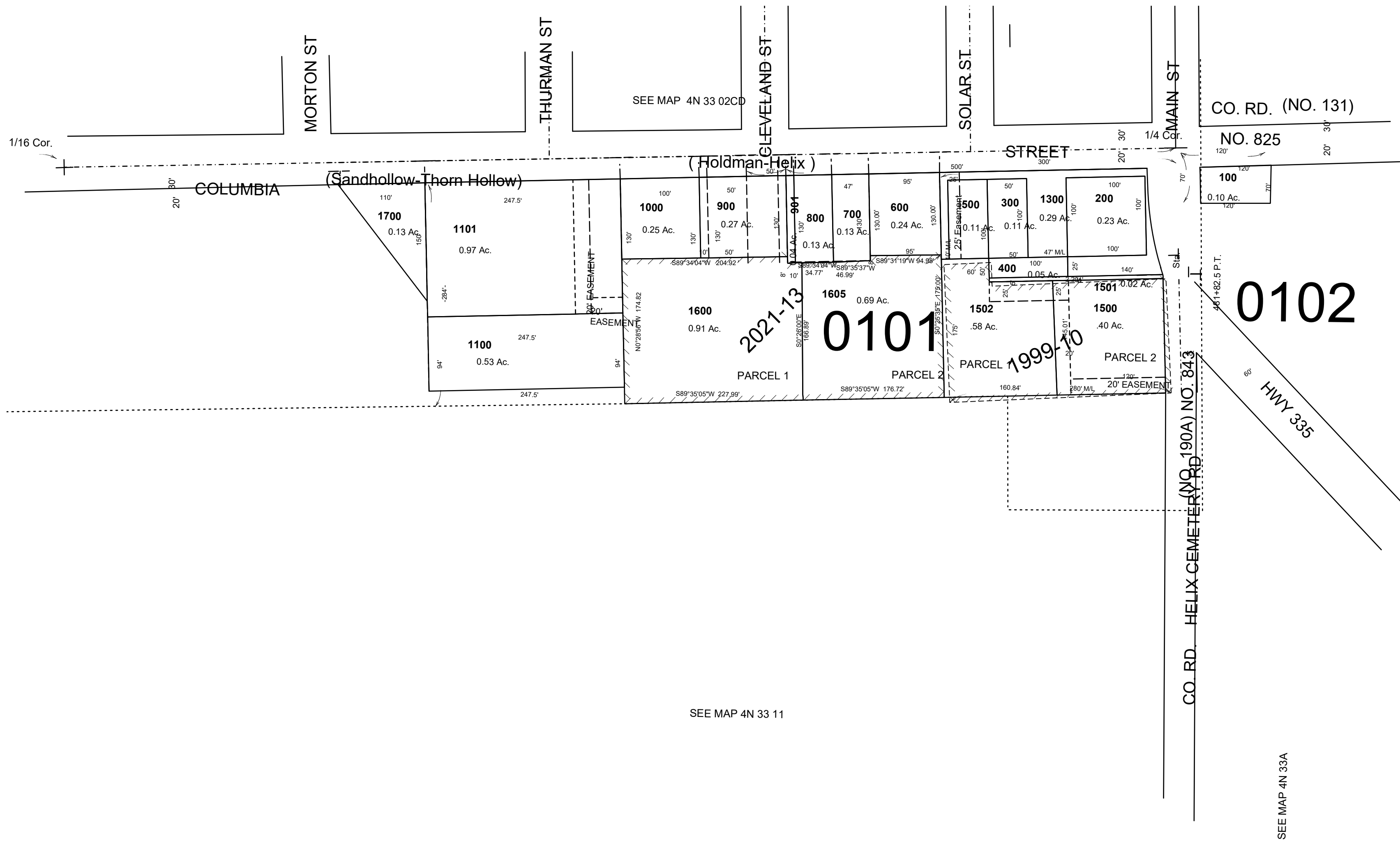


This map was prepared for Assessment & Taxation purposes only and was NOT prepared nor is it suitable for legal, engineering or surveying purposes.

NE1/4 NW1/4 SEC 11 T4N R33E WM UMATILLA COUNTY

4N 33 11BA
AERIAL PHOTO NO. NZ 6P-54

SCALE: 1" = 100'



0102

Revised: 05-19-2021

4N 33 11BA