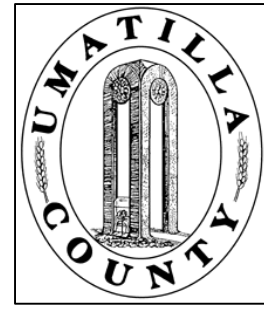


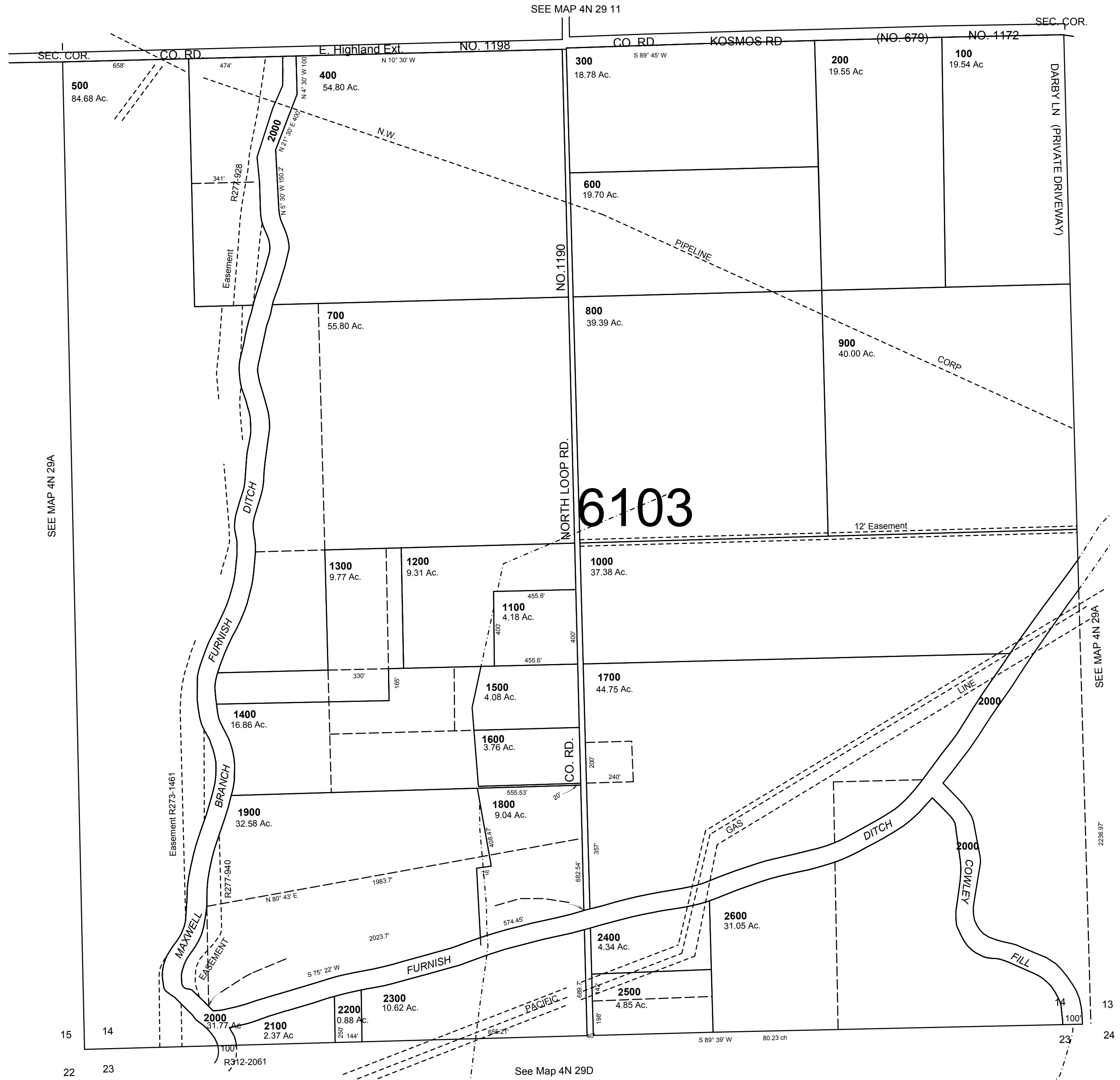
This map was prepared for Assessment & Taxation purposes only and was NOT prepared nor is it suitable for legal, engineering or surveying purposes.



# SEC 14 T4N R29E WM UMATILLA COUNTY

SCALE: 1" = 400'

**4N 29 14**  
AERIAL PHOTO NO. NZ-2P 15-15  
1P 127-130



Revised: 02-08-18

**4N 29 14**