

THIS MAP WAS PREPARED FOR
ASSESSMENT PURPOSES ONLY

NE1/4 SE1/4 Sec.15 T.4N.R.28E.W.M.
UMATILLA COUNTY

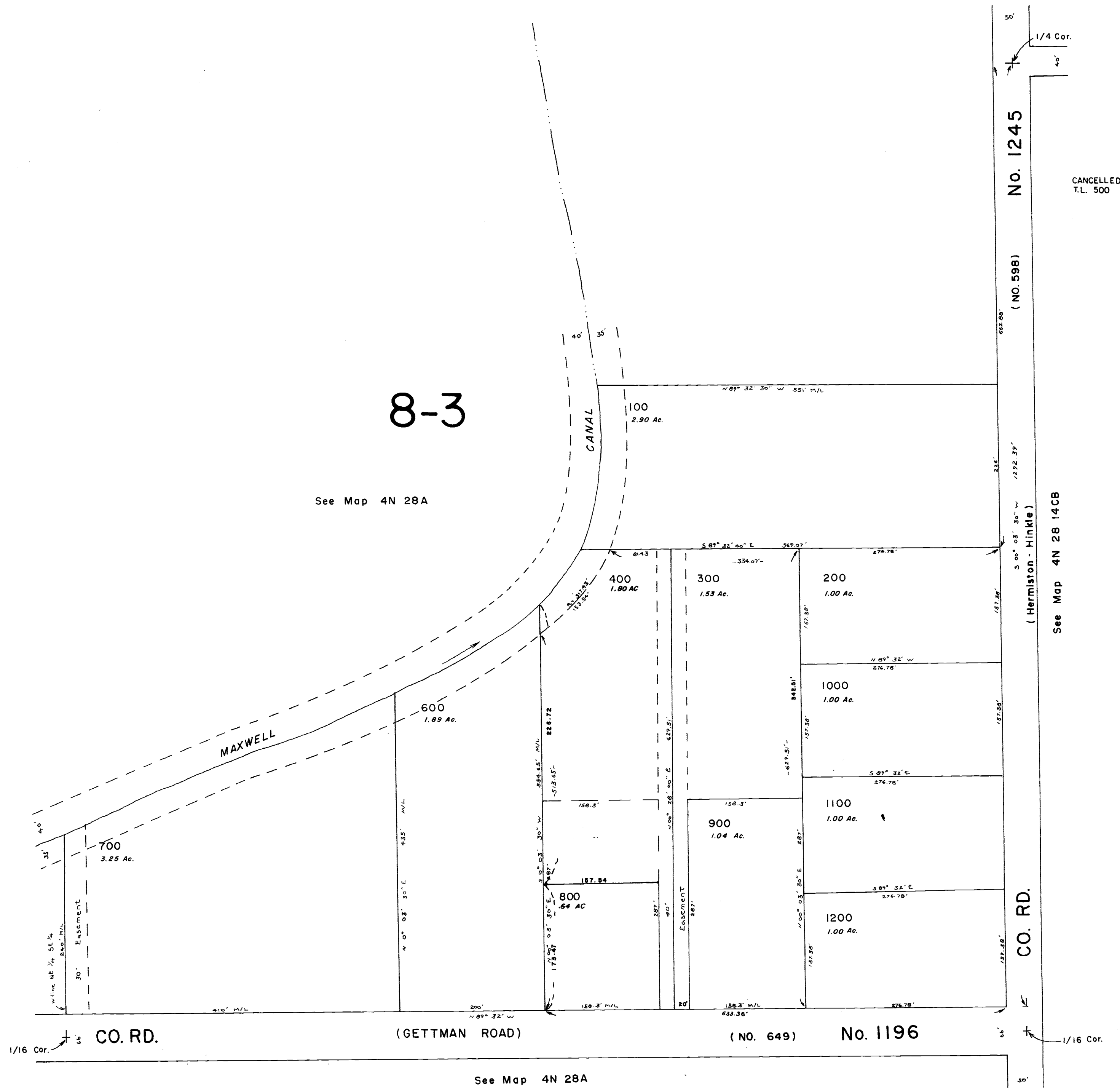
4N 28 15DA

Aerial Photo No. 2P-22

1"=100'

8-3

See Map 4N 28A



4N 28 15DA