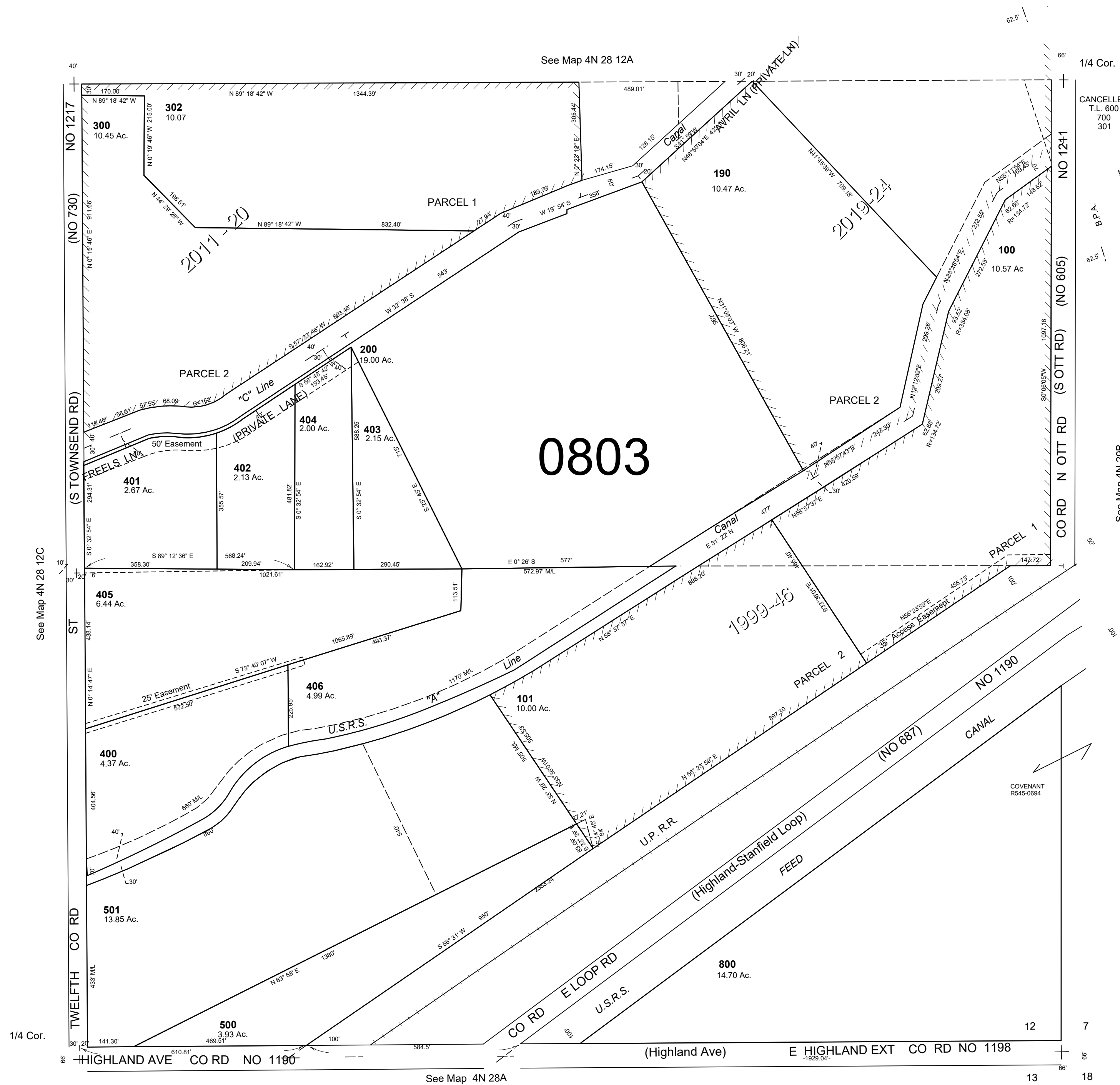


This map was prepared for Assessment & Taxation purposes only and was NOT prepared nor is it suitable for legal, engineering or surveying purposes.

SE1/4 SEC 12 T4N R28E WM  
UMATILLA COUNTY  
SCALE 1"=200'

4N 28 12D  
AERIAL PHOTO NO. 1P-123



Revised: 10-30-19  
4N 28 12D