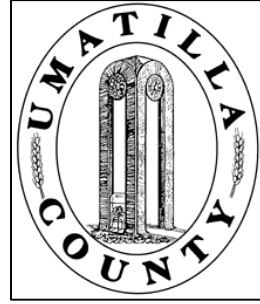


This map was prepared for Assessment purposes only.



# NW1/4 SW1/4 SEC 12 T4N R28E WM UMATILLA COUNTY, OR

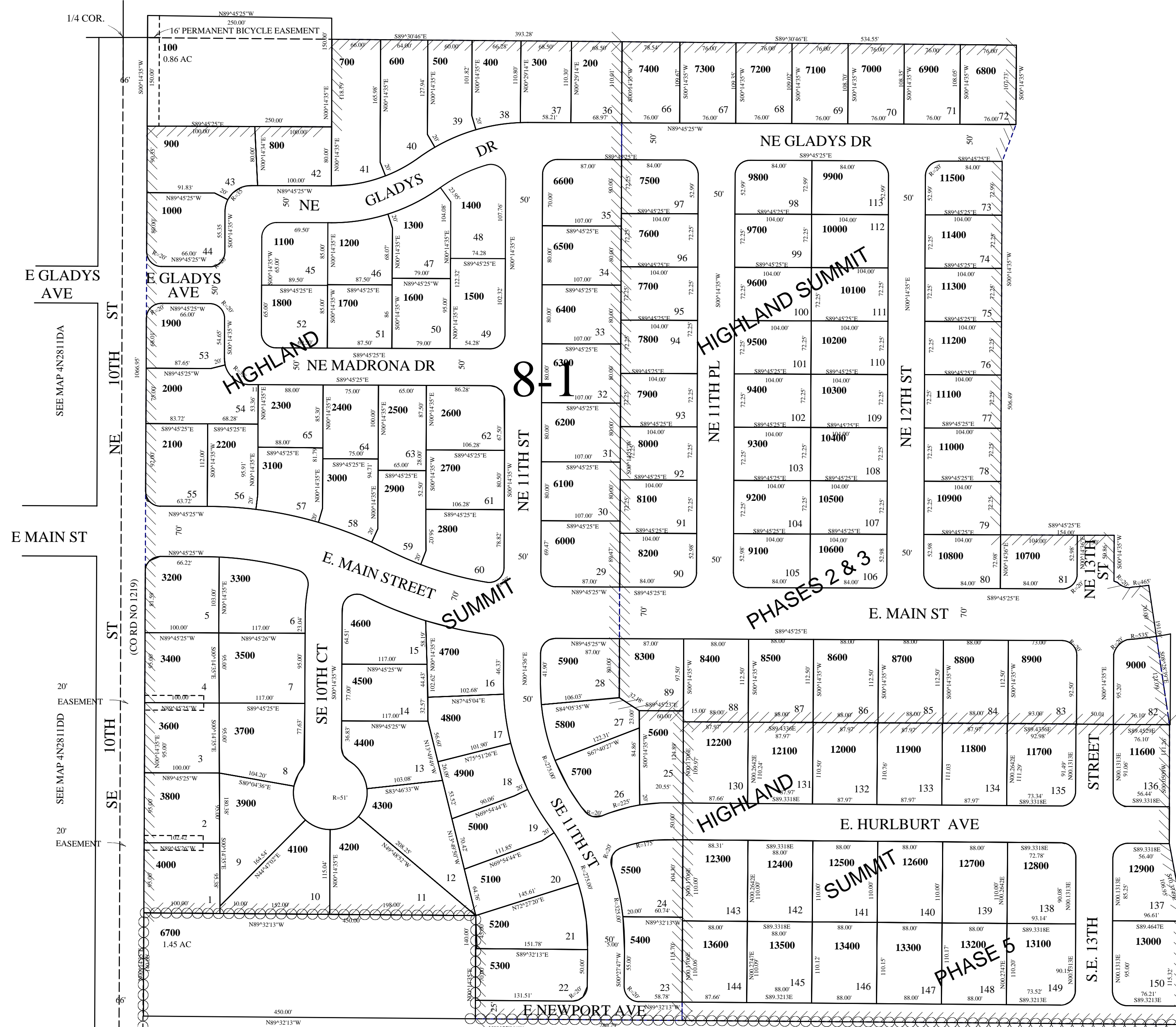
SCALE: 1" = 100'

5/29/03

4N2812CB

HIGHLAND SUMMIT  
HIGHLAND SUMMIT PH 2&3  
HIGHLAND SUMMIT PH 5

SEE MAP 4N2812B



1/4 COR.

E GLADYS AVE

E MAIN ST

20' EASEMENT

20' EASEMENT

8-1

8-3

SEE MAP 4N 28 12C

SEE MAP 4N2812C

4N2812CB