

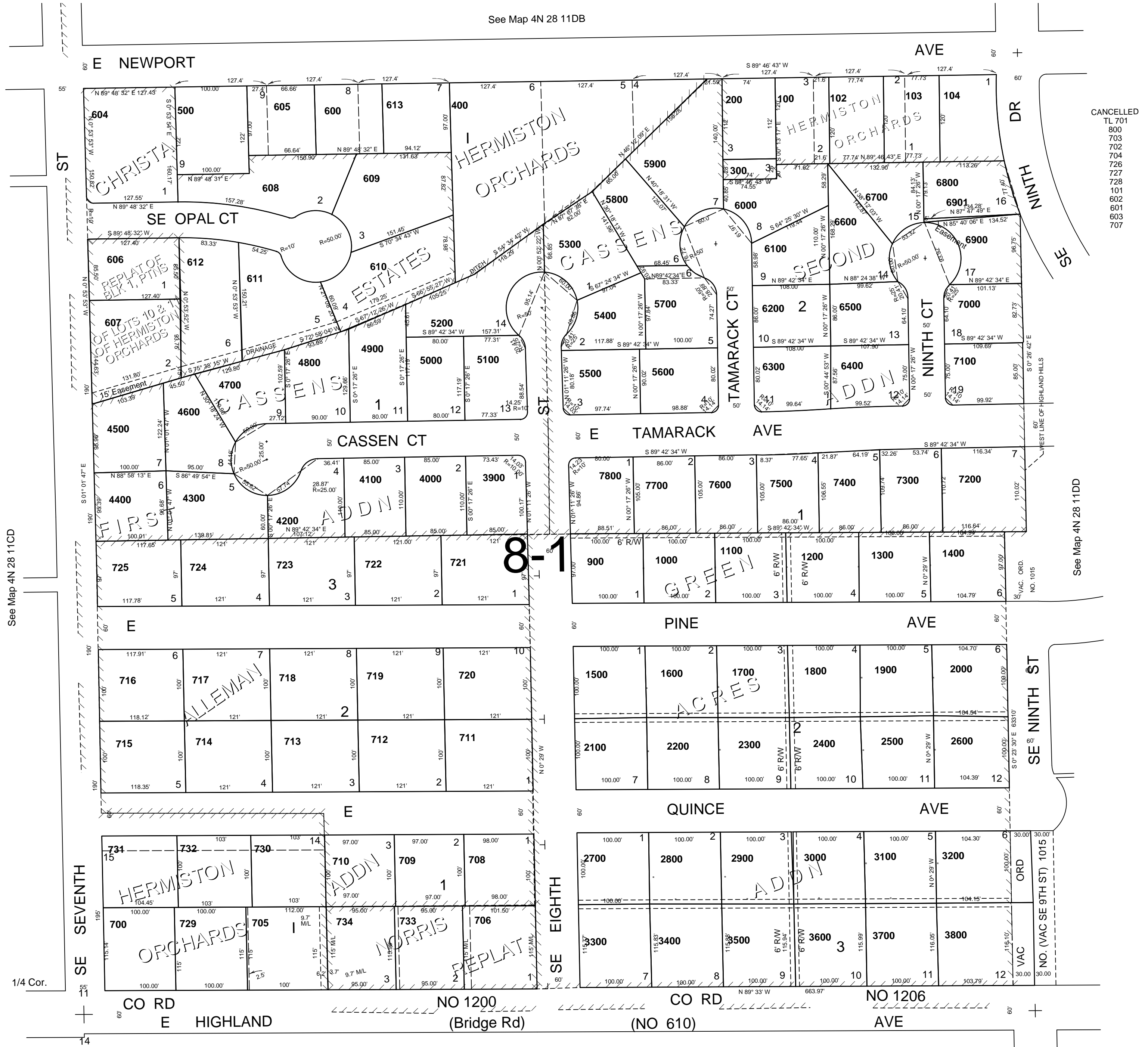
This map was prepared for Assessment & Taxation purposes only and was NOT prepared nor is it suitable for legal, engineering or surveying purposes.

# SW 1/4 SE 1/4 SEC 11 T4N R28E WM UMATILLA COUNTY

4N 28 11DC  
AERIAL PHOTO NO. NZ 1P-123

SCALE 1"=100'

See Map 4N 28 11DB



See Map 4N 28 14AB

Revised: 6/23/14

4N 28 11DC