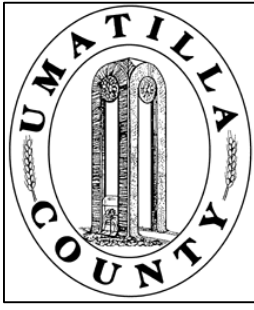


This map was prepared for Assessment & Taxation purposes only and was NOT prepared nor is it suitable for legal, engineering or surveying purposes.



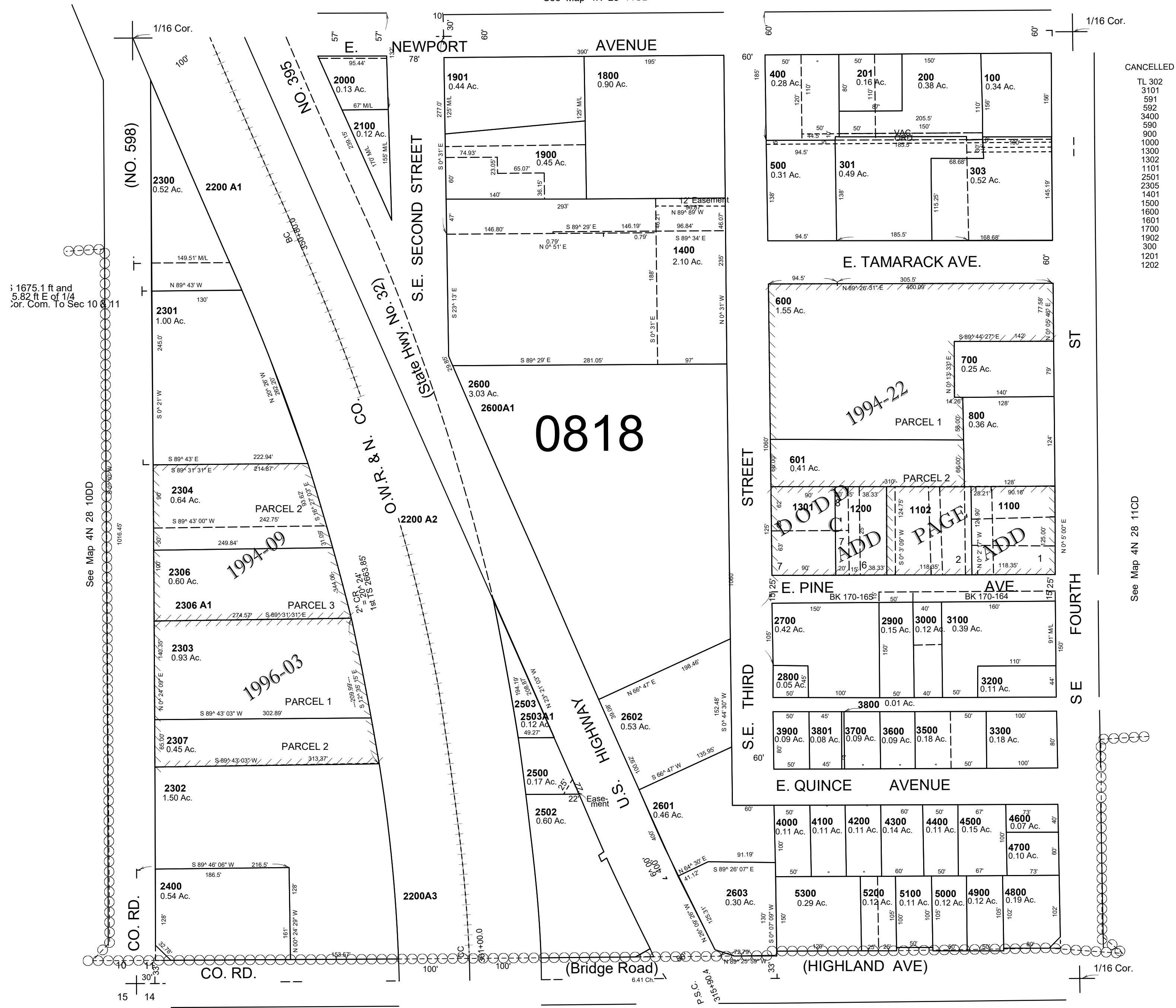
SW1/4 SW1/4 SEC 11 T4N R28E WM UMATILLA COUNTY

4N2811CC

AERIAL PHOTO NO. NZ-1P-123

SCALE: 1" = 100'

See Map 4N 28 11CB



CANCELLED
TL 302
3101
591
592
3400
590
900
1000
1300
1302
1101
2501
2305
1401
1500
1600
1601
1700
1902
300
1201
1202

1675.1 ft and
5.82 ft E of 1/4
Cor. Com. To Sec 10

0818

1994-22

DODD
ADD PAGE
DODD
ADD PAGE
DODD
ADD PAGE

U.S. HIGHWAY

ST
SE
FOURTH

See Map 4N 28 11CD

See Map 4N 28 14BB

Revised: 09-27-2021

4N2811CC