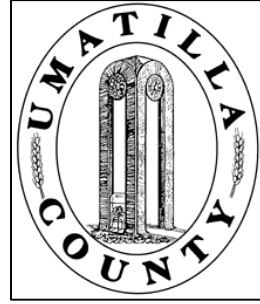


This map was prepared for Assessment purposes only.



# SE1/4 SEC 8 T 4N R 28E WM UMATILLA COUNTY, OR

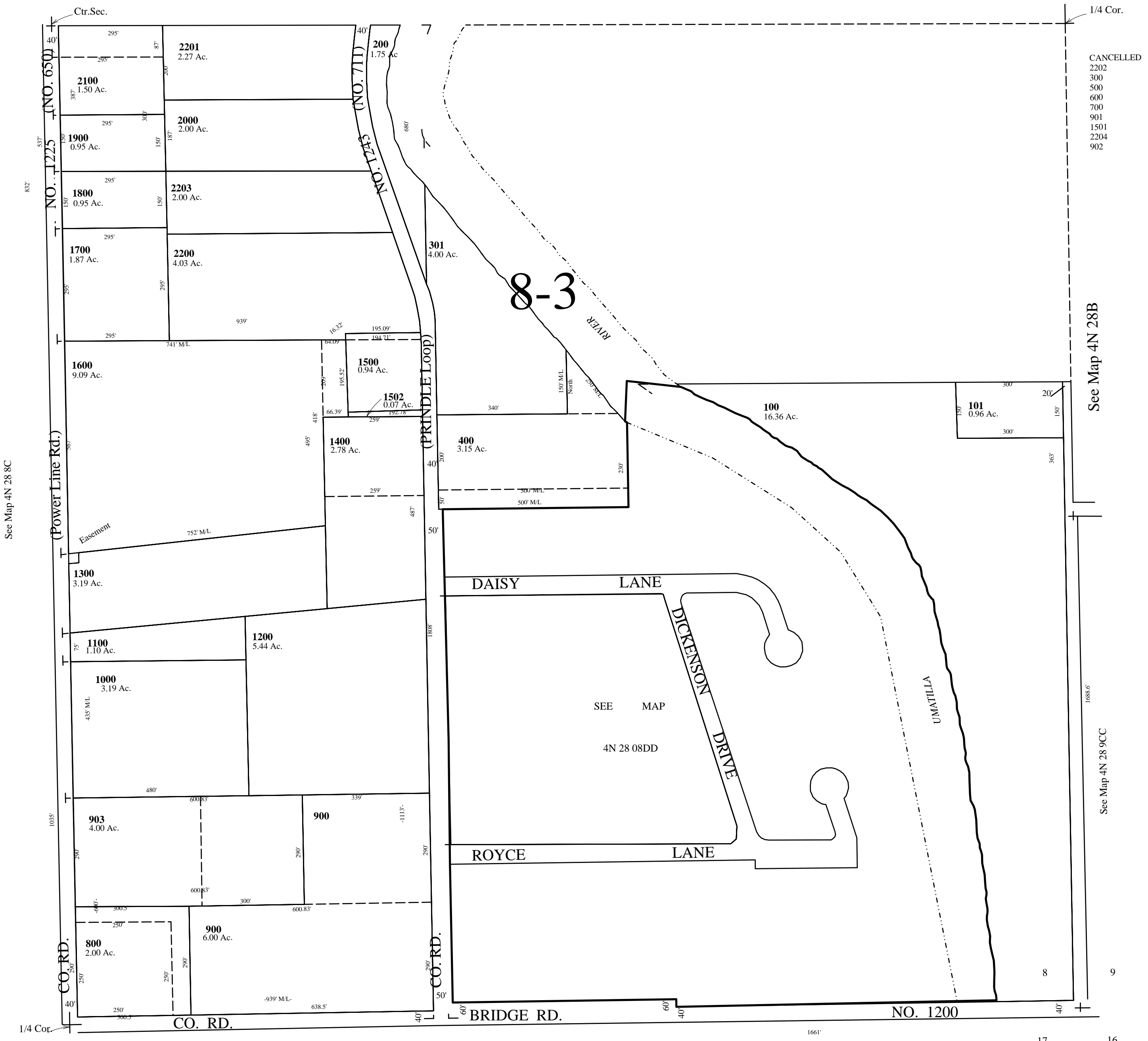
7/16/03

4N2808D

SCALE: 1" = 200'

Aerial Photo No. NZ-1P-120

See Map 4N 28B



See Map 4N 28 8C

See Map 4N 28B

See Map 4N 28 9CC

See Map 4N 28 17

4N2808D