

This map was prepared for Assessment & Taxation purposes only and was NOT prepared nor is it suitable for legal, engineering or surveying purposes.

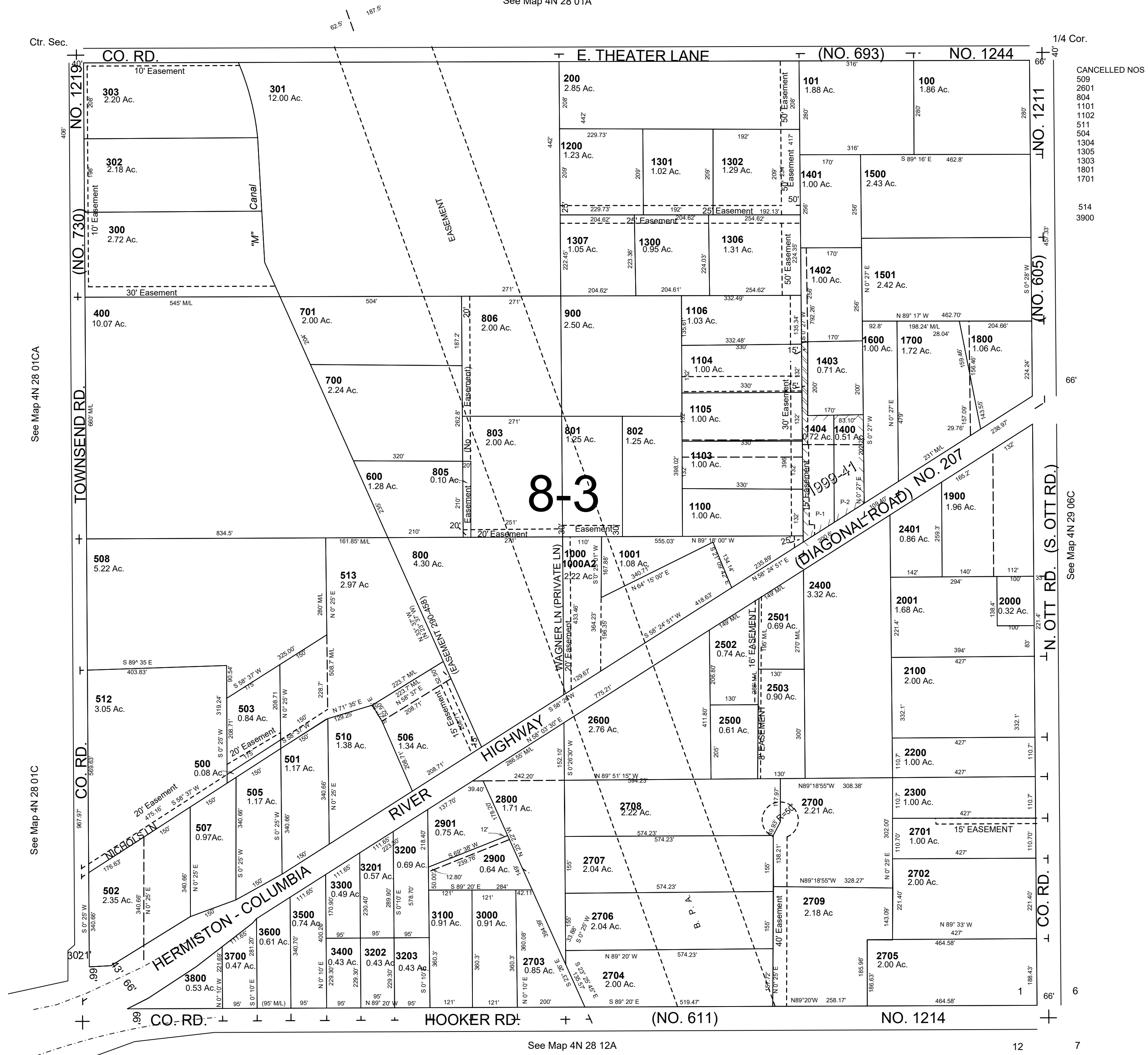
SE1/4 SEC 1 T4N R28E WM UMATILLA COUNTY

1"=200'

4N 28 01D

AERIAL PHOTO NO. NZ 1P-123

See Map 4N 28 01A



Revised: 05-08-18

4N 28 01D