

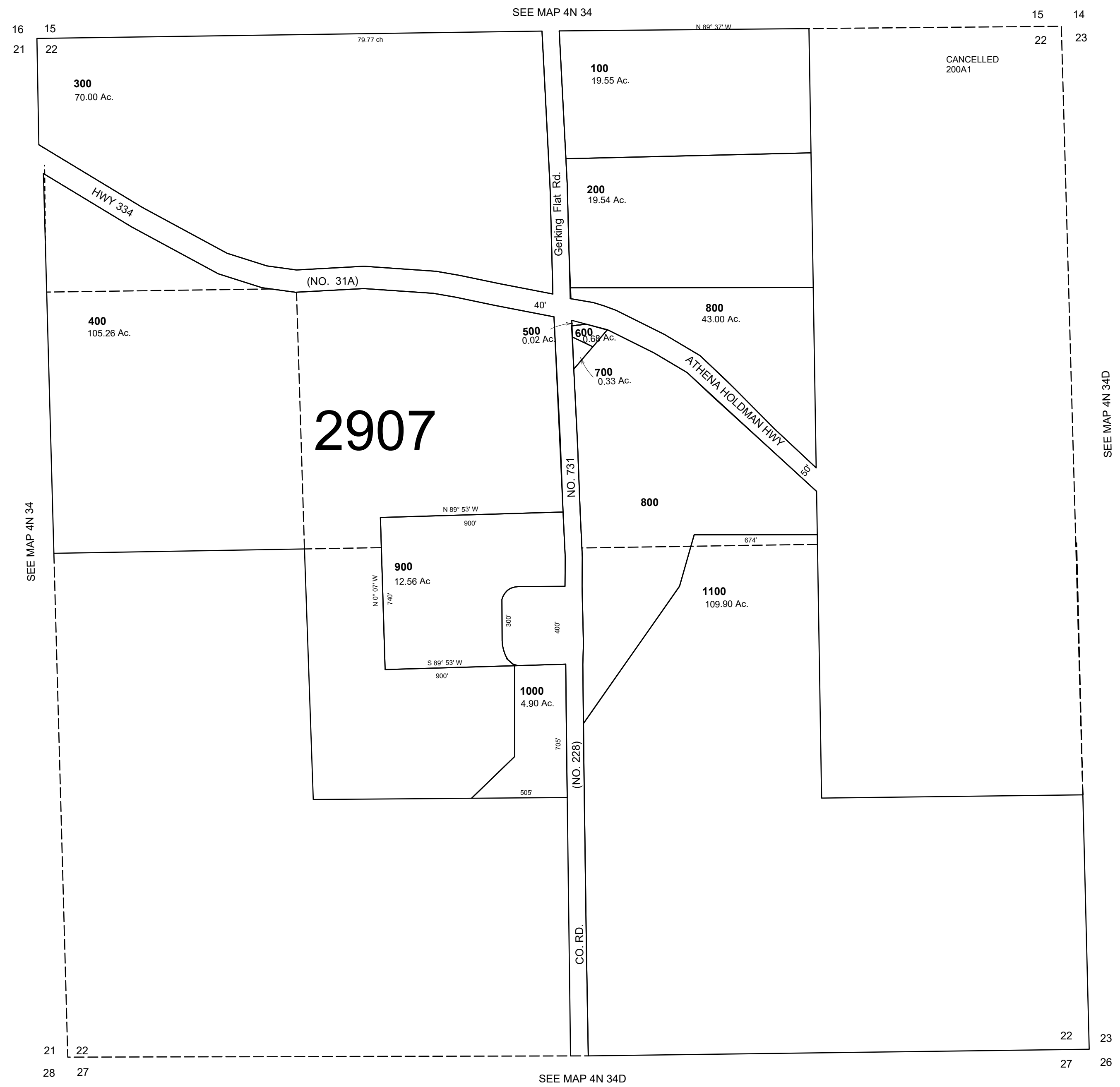
This map was prepared for Assessment & Taxation purposes only and was NOT prepared nor is it suitable flegal, engineering or surveying purposes.

# SEC. 22 T4N R34E WM UMATILLA COUNTY

SCALE 1"=400'

## 4N 34 22

AERIAL PHOTO NO. NZ-5P 54-60, 100-105,132-136



Revised: 09-13-2021

## 4N 34 22