

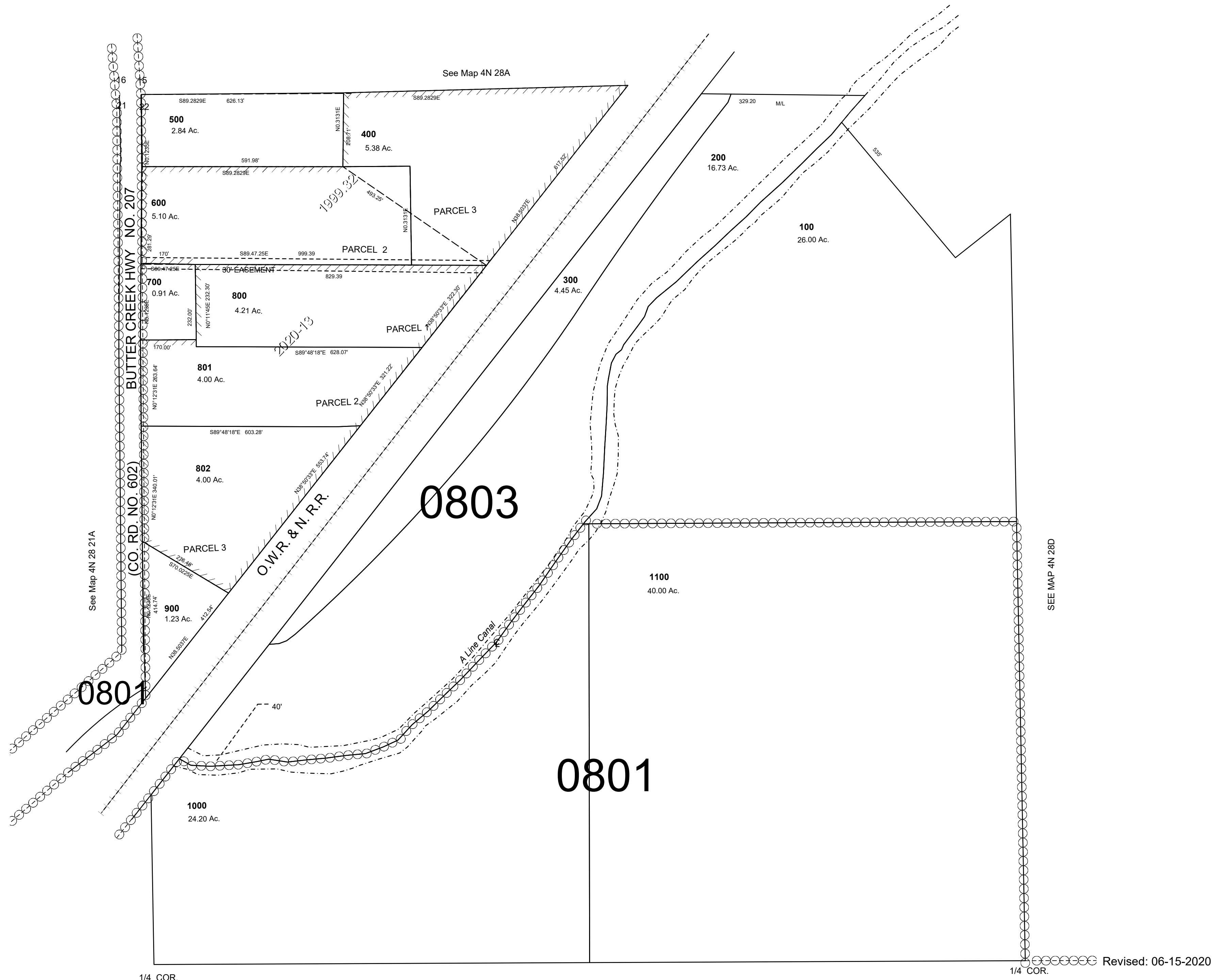
This map was prepared for Assessment & Taxation purposes only and was NOT prepared nor is it suitable for legal, engineering or surveying purposes

NW 1/4 SEC 22 T4N R28E WM  
UMATILLA COUNTY

SCALE: 1" = 200'

4N 28 22B

AERIAL PHOTO NO. NZ-2P-21-24  
2P-41-42



SEE MAP 4N 28D

4N 28 22B