

This map was prepared for Assessment & Taxation purposes only and was NOT prepared nor is it suitable for legal, engineering or surveying purposes.

Cancelled Tax Lots

100
2100
3000

SW 1/4 NE 1/4 SEC 15 T4N R28E WM

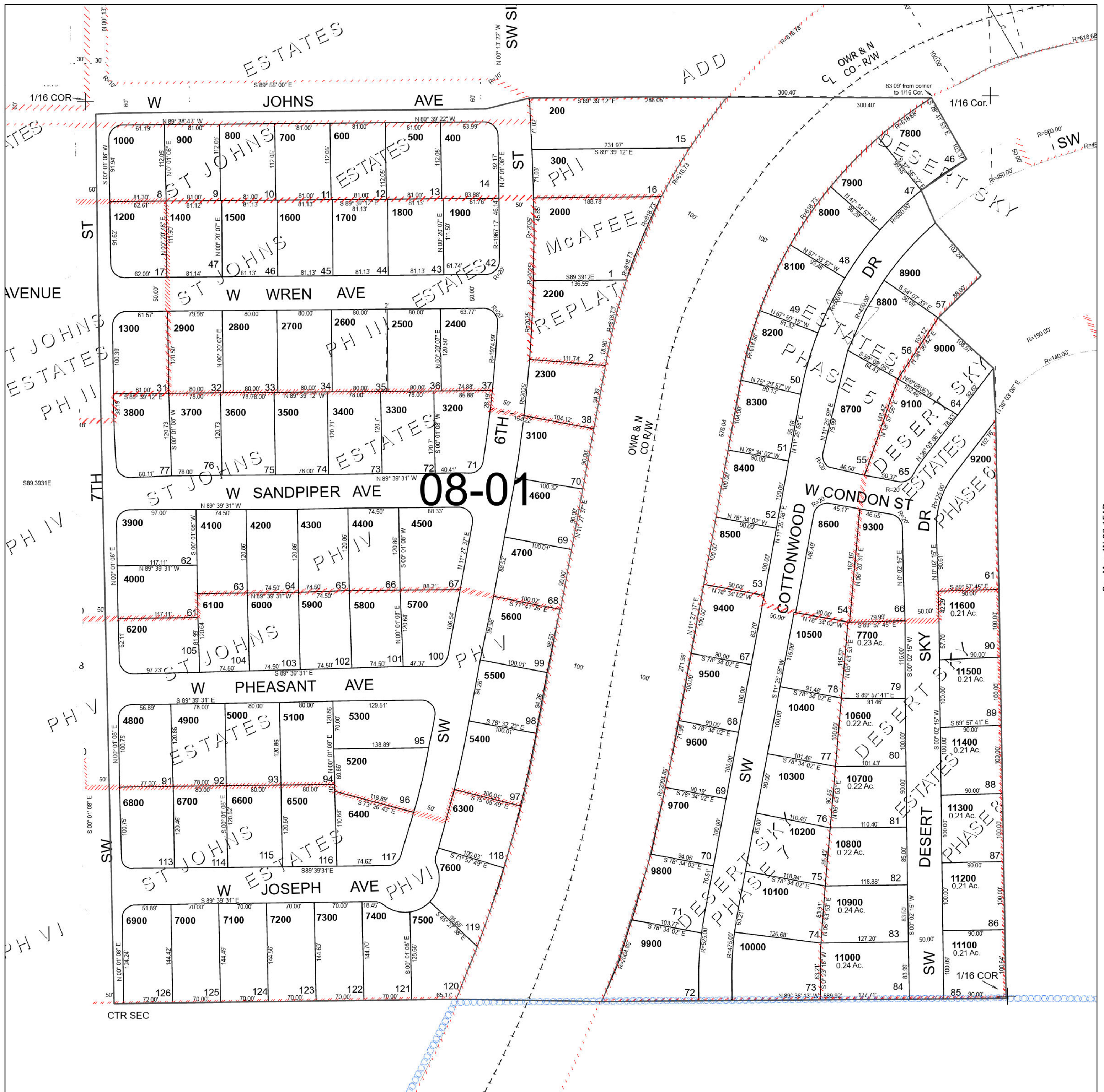
UMATILLA COUNTY

SCALE 1" = 100'

Hermiston

4N 28 15AC

See Map 4N 28 15AB



See Map 4N 28 15BD

See Map 4N 28 15AD