

This map was prepared for Assessment & Taxation purposes only and was NOT prepared nor is it suitable for legal, engineering or surveying purposes.

Cancelled Tax Lots

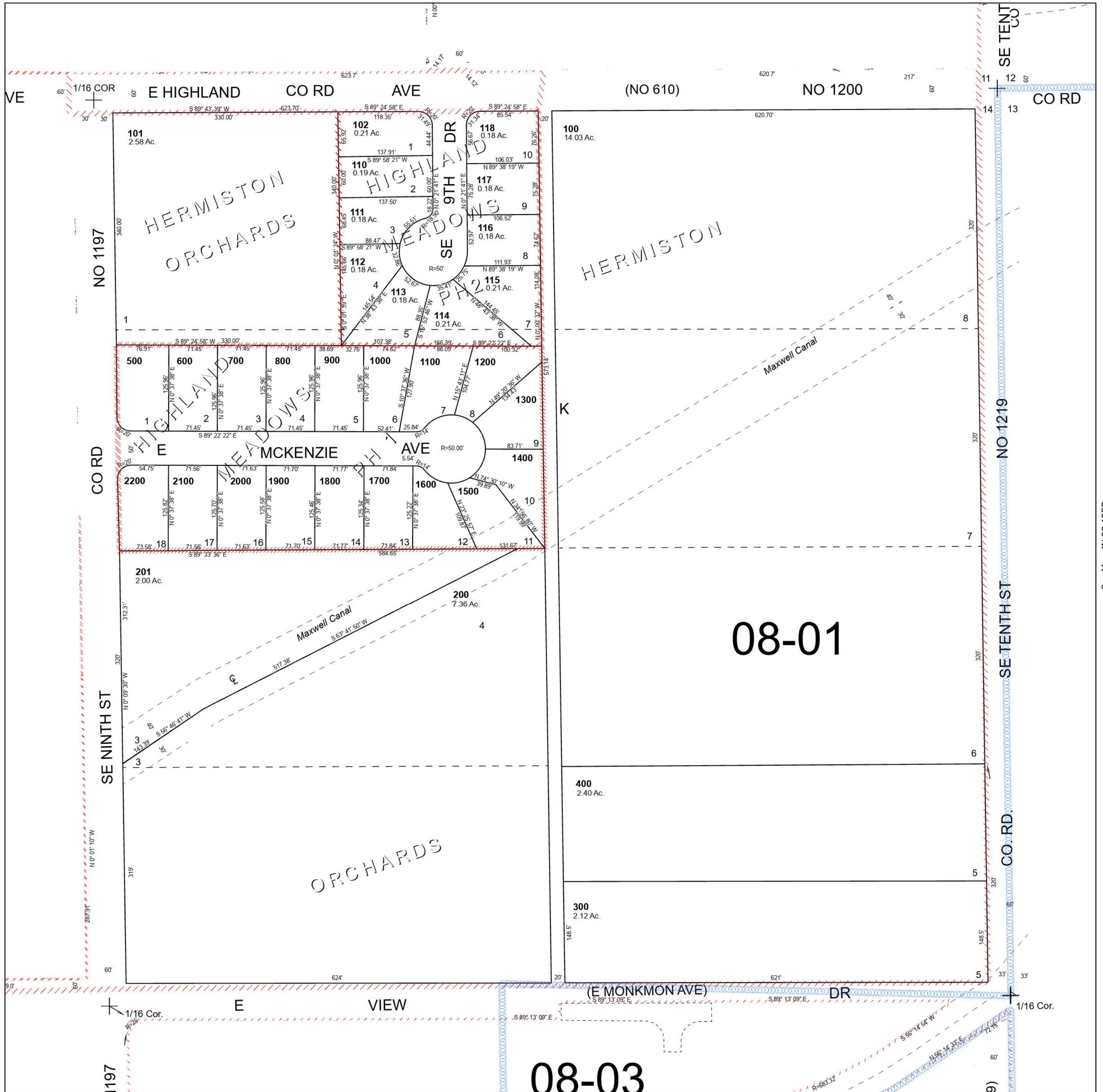
# NE 1/4 NE 1/4 SEC 14 T4N R28E WM UMATILLA COUNTY

Hermiston

SCALE 1" = 100'

## 4N 28 14AA

See Map 4N 28 11DD



# 08-01

# 08-03

See Map 4N 28 14AB

See Map 4N 28 13BB