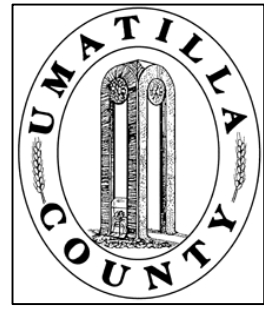


This map was prepared for Assessment & Taxation purposes only and was NOT prepared nor is it suitable for legal, engineering or surveying purposes.



SW1/4 NE1/4 SEC 11 T 4N R 28 E WM UMATILLA COUNTY

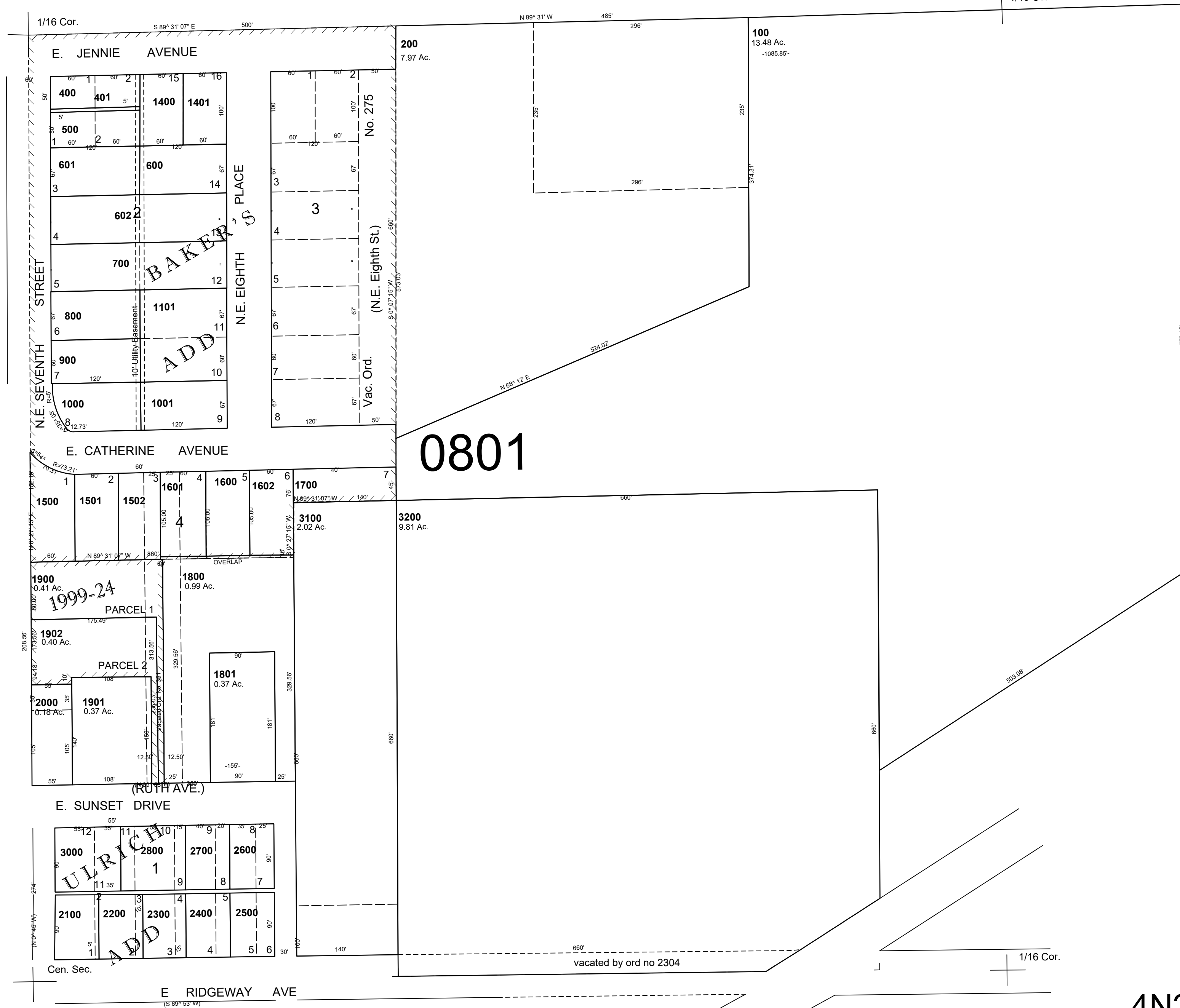
4N2811AC

AERIAL PHOTO NO NZ 1P-123

SCALE: 1" = 100'

See Map 4N 28 11

CANCELLED
TL 1300 1200
2900 1100
2901
201
300



See Map 4N 28 11AD

REVISED: 008-31-2021

4N2811AC

See Map 4N 28 11DB