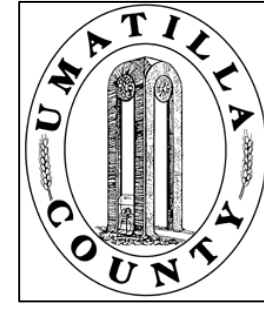


This map was prepared for Assessment & Taxation purposes only and was NOT prepared nor is it suitable for legal, engineering or surveying purposes.



# NE1/4 SEC 1 T 4N R 28E WM UMATILLA COUNTY

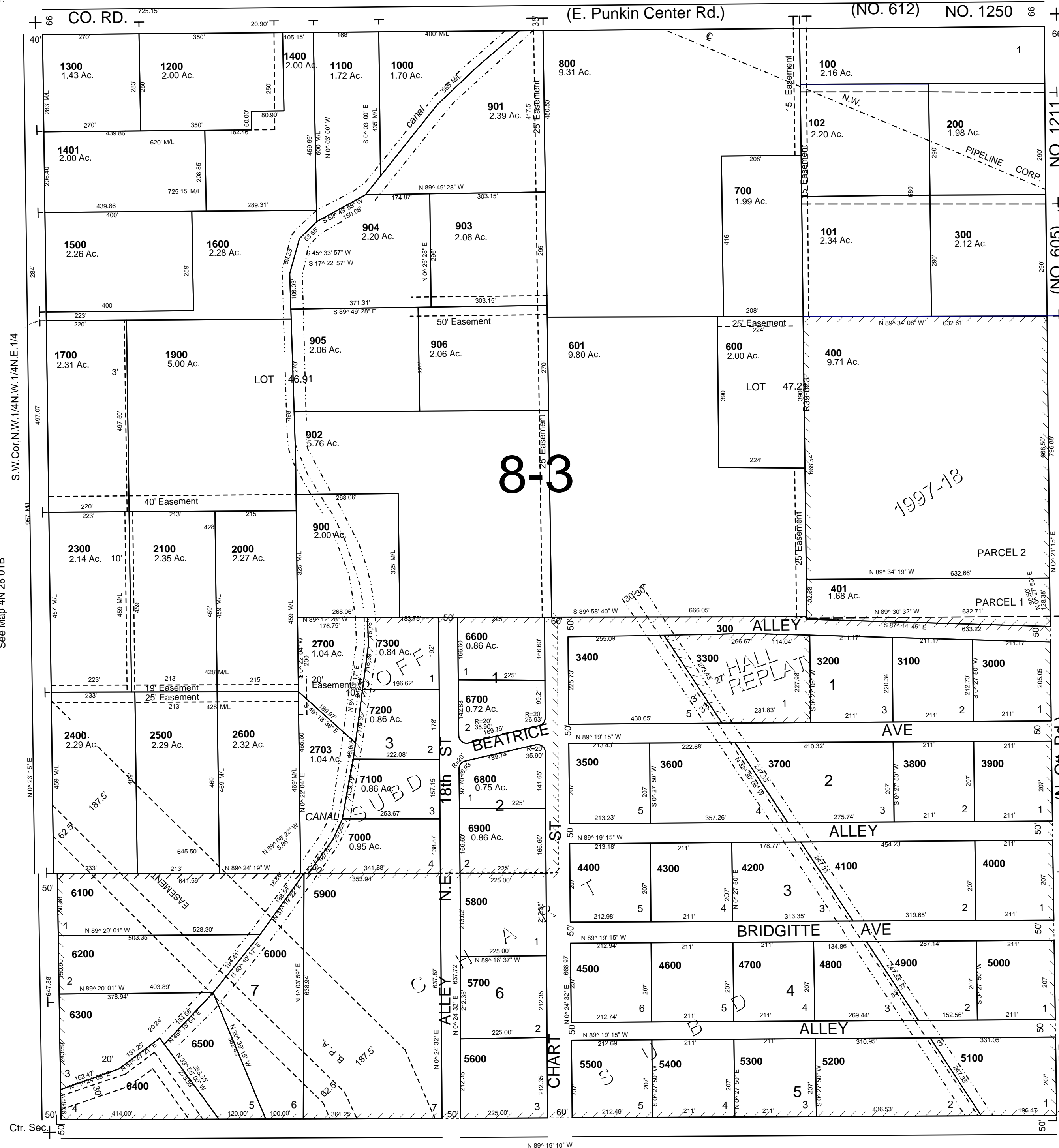
SCALE: 1" = 200'

## 4N 28 01A

AERIAL PHOTO NO. NZ-1P-124

See Map 5N 28 36D

1/4 Cor.



Cancelled Nos  
2200  
501  
500  
2800  
2900  
2702  
2701  
1800

See Map 4N 29 06B

Revised: 06-16-14

1/4 Cor.

## 4N2801A