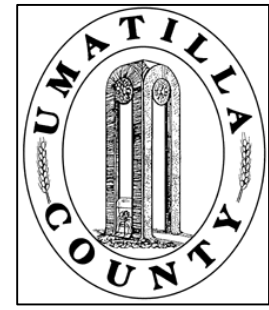


This map was prepared for Assessment & Taxation purposes only and was NOT prepared nor is it suitable for legal, engineering or surveying purposes.

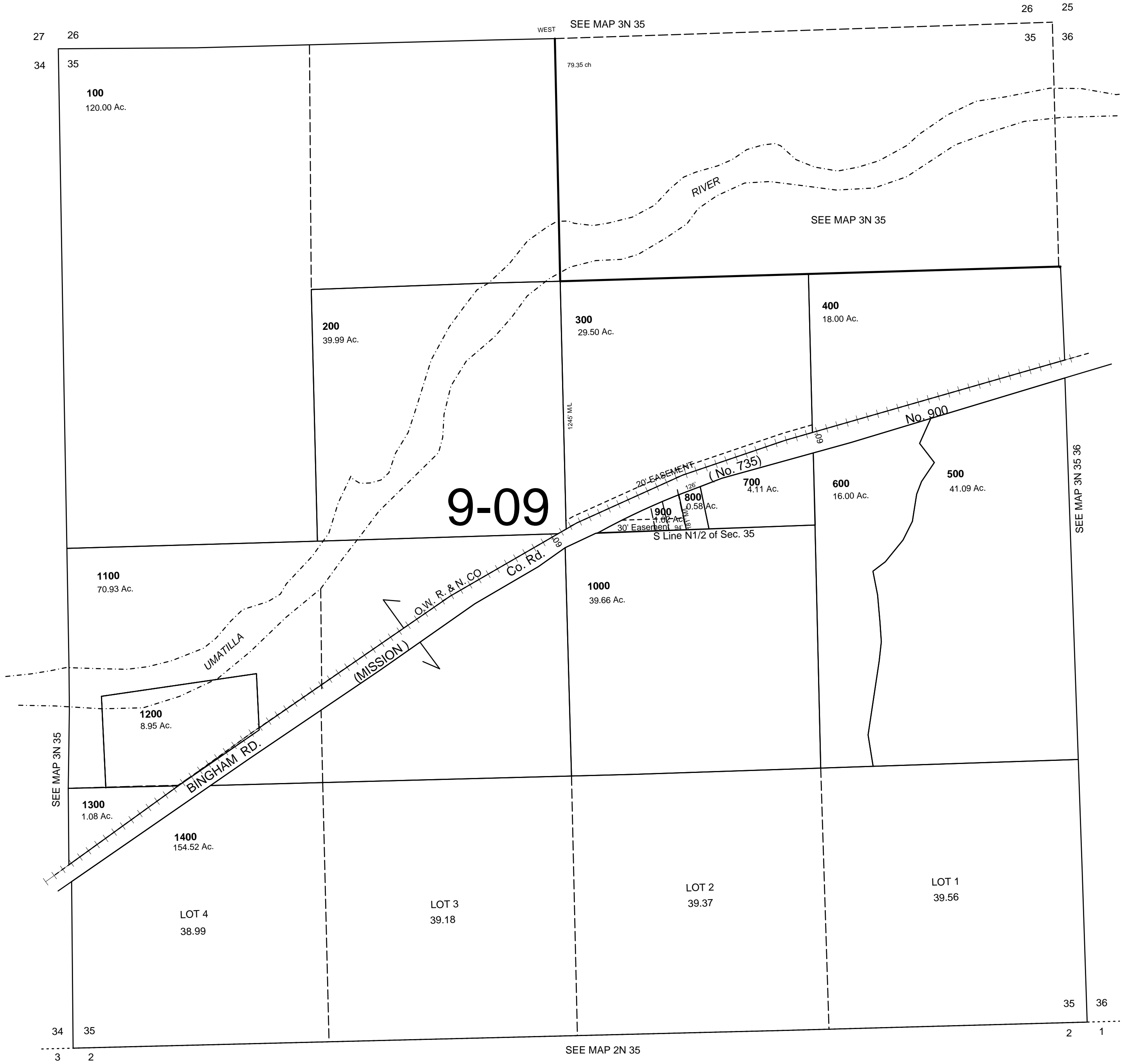


SEC 35 T3N R35E WM UMATILLA COUNTY, OR

SCALE: 1" = 400'

3N 35 35

AERIAL PHOTO NO. NZ-3P 161-165 & 4P 148-153
4P 128-132



Revised:8-17-11

3N 35 35