

This map was prepared for Assessment & Taxation purposes only and was NOT prepared nor is it suitable for legal, engineering or surveying purposes.

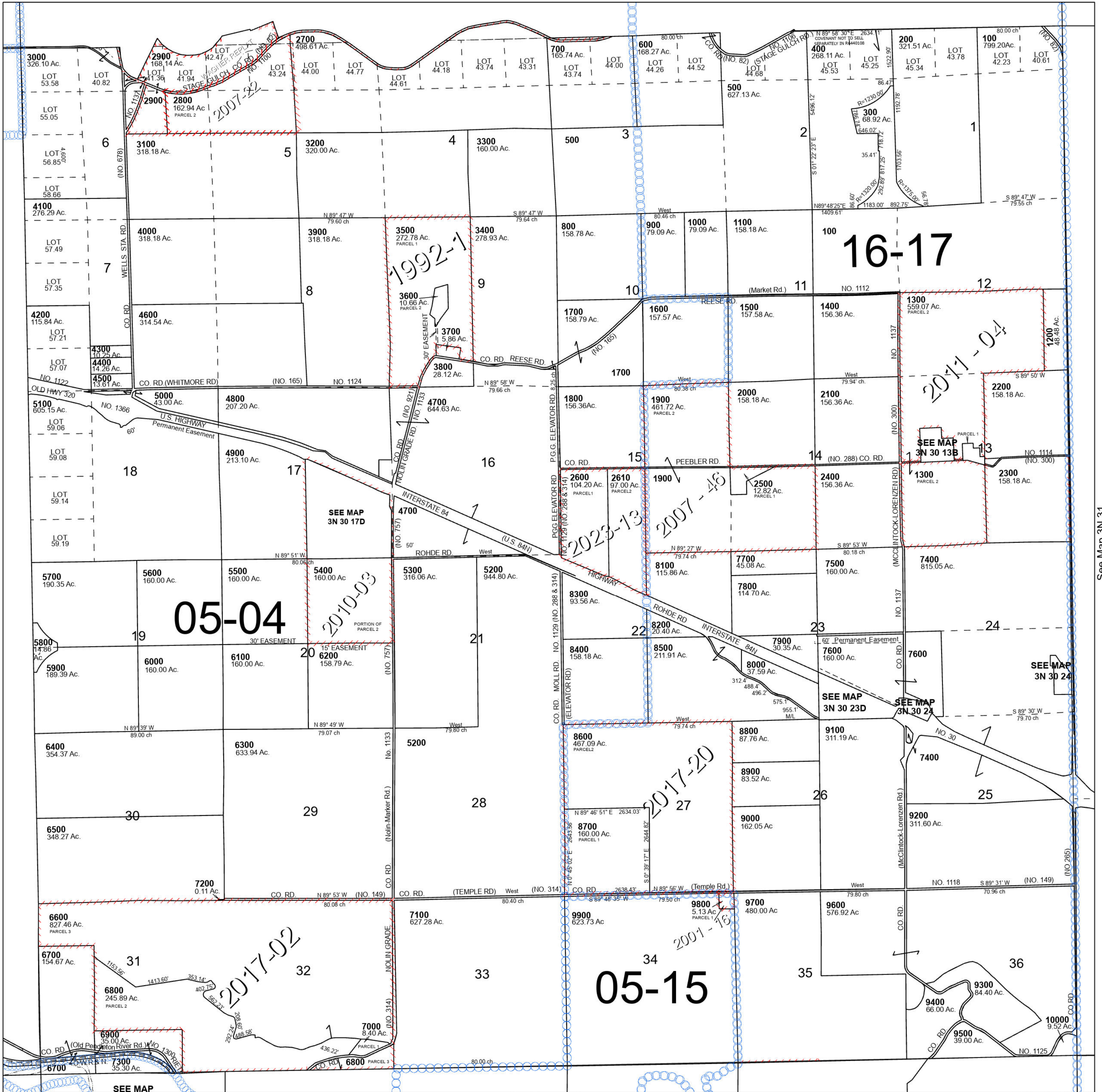
Cancelled Tax Lots

T3N R30E WM UMATILLA COUNTY

3N 30

SCALE 1" = 2,000'

See Map 4N 30



See Map 3N 29

See Map 3N 31

05-04

05-15

16-17

Revised 3/13/2024

See Map 2N 30

3N 30