

This map was prepared for Assessment & Taxation purposes only and was NOT prepared nor is it suitable for legal, engineering or surveying purposes.

T2S R32E WM UMATILLA COUNTY

2S 32

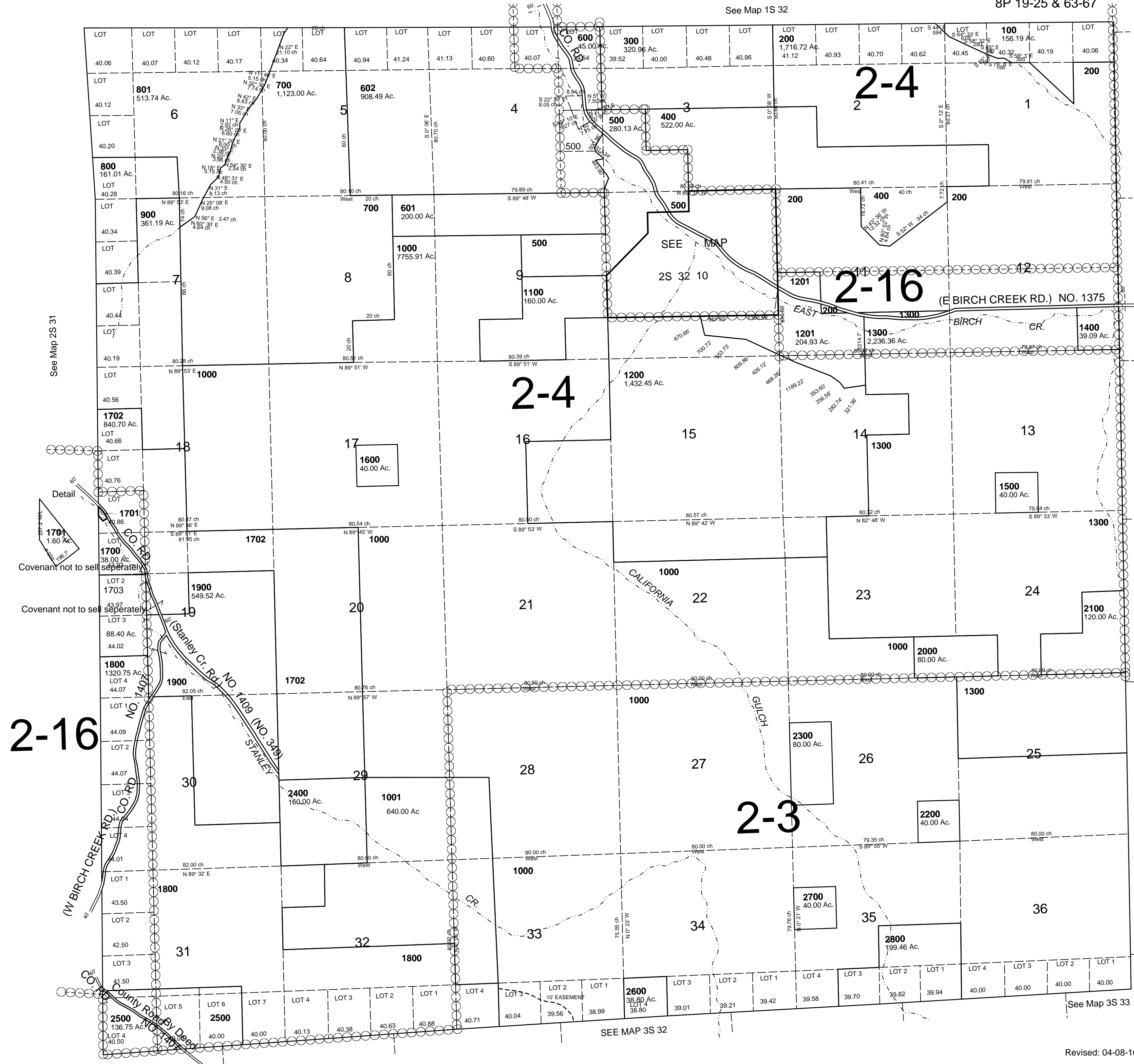
SCALE 1"=2000'

AERIAL PHOTO NO. 7P 147-153

8P 19-25 & 63-67

See Map 1S 32

CANCELLED NOS
1200A1
1000A1



Revised: 04-08-16

2S 32