

This map was prepared for Assessment & Taxation purposes only and was NOT prepared nor is it suitable for legal, engineering or surveying purposes.

# T2S R31E WM UMATILLA COUNTY

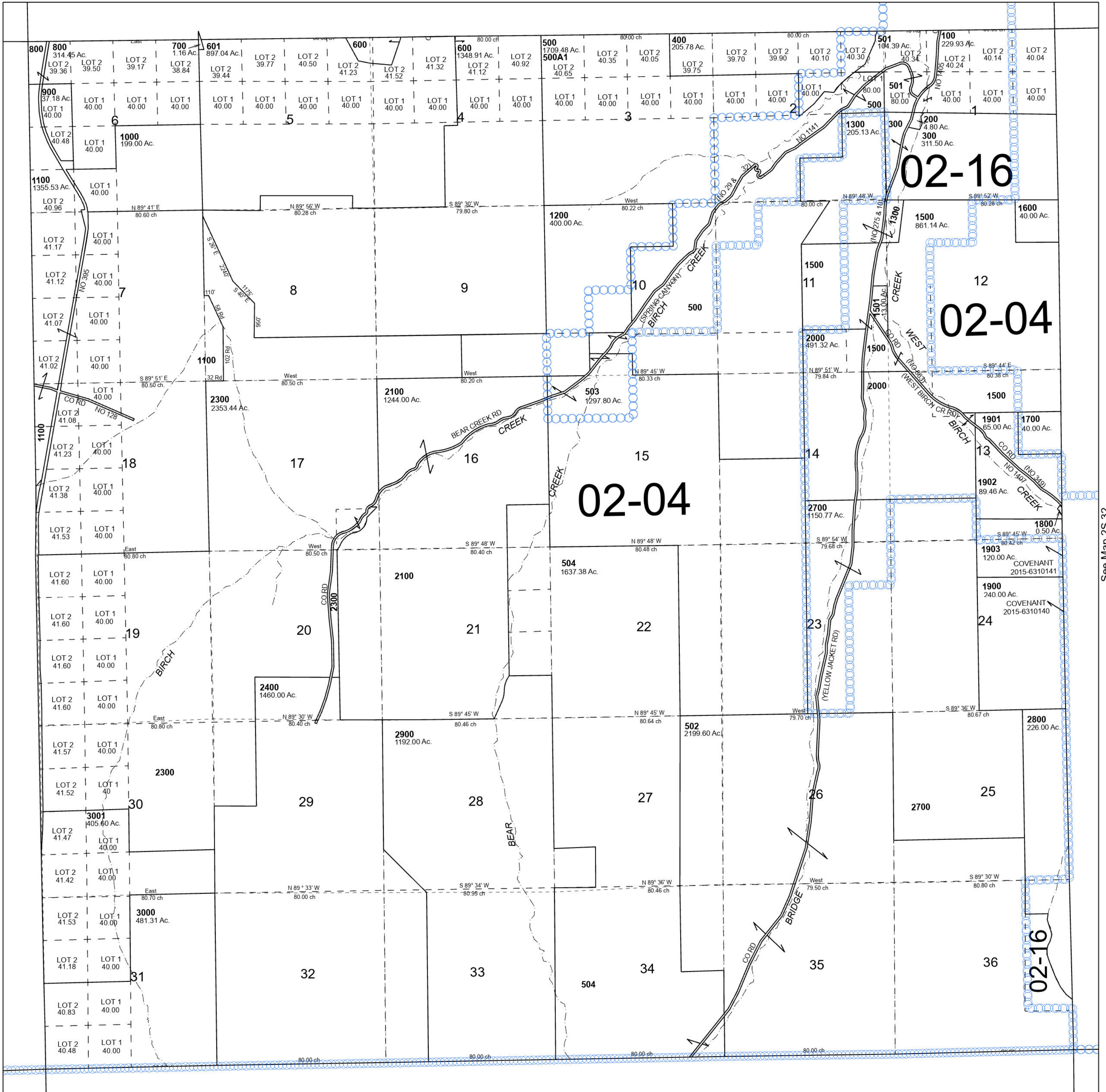
2S 31

SCALE 1" = 2,000'

Cancelled Tax Lots

- 1101
- 1400
- 2200
- 2500
- 2600
- 602

See Map 1S 31



See Map 2S 30

See Map 2S 32