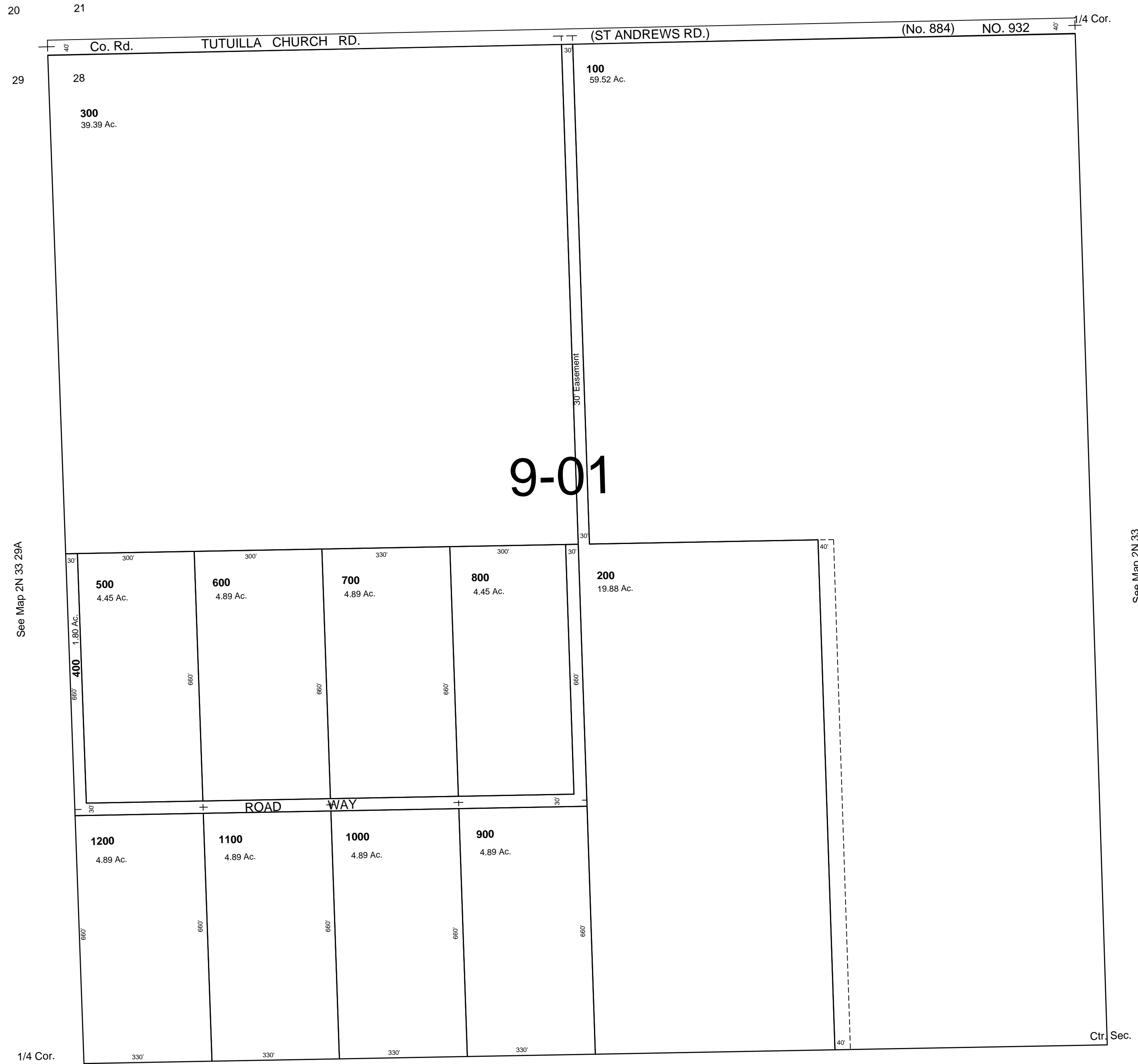


This map was prepared for Assessment & Taxation purposes only and was NOT prepared nor is it suitable for legal, engineering or surveying purposes.

NW 1/4 SEC 28 T2N R33E WM
UMATILLA COUNTY
SCALE 1"=200'

2N 33 28B
AERIAL PHOTO NO 4P-45

See Map 2N 33



See Map 2N 33 29A

See Map 2N 33

See Map 2N 33

Revised: 10-22-09

2N 33 28B